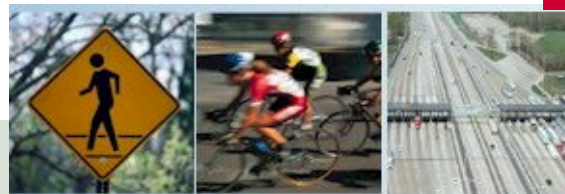


items

NEWSLETTER OF THE ILLINOIS SECTION
INSTITUTE OF TRANSPORTATION ENGINEERS



December 2008

VOLUME 47, ISSUE 4
WINTER ISSUE



INSIDE THIS ISSUE:

**SECTION AND
DISTRICT NEWS** 2-9

**2009 ANNUAL
BANQUET &
CONFERENCE** 10-
12

**PROFESSIONAL
DEVELOPMENT** 13

**CONFERENCES &
CALL FOR
PAPERS** 13-
15

**SECTION
CALENDAR** 16

**'09-'10
PLANNER** 17

**BUSINESS ADS &
INDUSTRY NEWS** 17-
21

**EDITOR'S DESK
& DIRECTORY** 22

END OF THE YEAR SOCIAL EVENT

Join us at **Brunswick Zone**,
519 Consumers Avenue,
Palatine, IL
Telephone (847) 392-8290

Date: December 16, 2008

Time: 6:00 to 8:00 P.M.

Cost: Students— \$10
Members — \$25

Details: Join fellow ITE members for an end of the year social event. Pizza and soft drinks will be provided in addition to the bowling and shoe rental.

PRESIDENT'S MESSAGE



As this will be my last opportunity to write President's Notes for this newsletter, I would like to thank all of you who have contributed to the success of the Illinois Section during the past year. During the past twelve months the Section has accomplished a great deal, successfully hosting the Midwestern District Conference, providing numerous, outstanding technical lunch meetings, and participating in exciting area activities including the Future Cities Program, Sponsorships for Pre-Trans Program, and Engineer's Week. Our Section Board members, technical group directors, committee members and many others have put in significant effort to provide continuing education opportunities. I thank you all for all your hard work.

The year has been a busy and exciting year for the Illinois Section. It has been great to work with all of the current Officers and Directors, as well as coordinate with the Midwestern District Board. I would like to extend my thanks to **Matt Letourneau** (Vice President), **Tim Sjogren** (Secretary), and **Kim Silverman Kolody** (Treasurer) for helping to keep the Section running and moving forward.

I would like to thank all of the Directors for their hard work and dedication, including **Joel Christell** (Activities), **Tom Hein** (Operations), **Chad Hammerl** (Public Affairs), **Kevin O'Neill** (Student Affairs), and **Mike Pompili & Dan Nowak** (Technical). I wish you all the best for next year.

The Section held its annual elections in November. I would like to congratulate all of those who will be serving on the Board in 2009 and the new Board members **Dan Nowak**, **Sara Disney Haufe** and **Brian DeSalle**.

We have had a great year of luncheons in Chicago, Oak Brook, Naperville, and Rockford with a wide range of topics. The ITE Midwestern District Conference hosted by the Illinois Section was a big success. Special thanks to **Mark Rinnan** and **Peter Lemmon** for their dedication in putting together the Conference.

On December 4, the Section along with the Illinois Section of the American Society of Civil Engineers will be hosting the Highway Safety Manual Course at DuPage County Division of Transportation. My thanks to our instructor Mr. **Fred Ranck**, who serves as the Federal Highway Administration's Safety & Geometrics Engineer.

I plan on attending the Midwestern District fall officers meeting, which is scheduled from December 10-11 in Delafield, WI. One of the purposes for the meeting is to continue working to develop new programs that were identified as part of the District's Strategic Plan. Other items to be worked on at the meeting are routine business discussion on budget, 2009 District Conference and Section Activities.

(Continued on page 3)



ILLINOIS SECTION ELECTION RESULTS

Results are in for the Illinois Section conducted officer and board elections using on-line balloting. This was the third year ballots were cast using an on-line polling service. **Matt Letourneau** was elected to advance from Vice-President to Section President for 2009. Also advancing were **Tim Sjogren** (from Secretary to Vice-President) and **Kim Kolody-Silverman** (from Treasurer to Secretary). **Joel Christell** prevailed in the race for Section Treasurer. Congratulations to all candidates, and many thanks to **Sagar Sonar** for conducting a fine campaign. A listing of the first time office holders by position and their biographical summaries follows.

TREASURER ELECT—JOEL CHRISTELL

Mr. Joel Christell, P.E., has worked for Civiltech for over 9 years. He serves as a Project Manager and Engineer on a variety of project including highway and roadway design, environmental and location design studies, Pre-Phase I studies and location drainage studies. Joel has a bachelor's degree in Civil and Environmental Engineering from the University of Illinois at Urbana-Champaign and currently serves the Section as Activities Group director.

DIRECTOR ELECT—SARA HAUFE

Ms. Sara Disney Haufe works in the traffic engineering group at Metro Transportation Group in Hoffman Estates and serves the Section as chair of the Scholarship committee. Since earning a bachelor's degree in Civil Engineering from the University of Illinois in 2005, Sara has

been building her career experience with involvement in interchange feasibility studies, a downtown revitalization study for the City of DeKalb, and transportation planning for the Chicago Olympic Bid, among others.

DIRECTOR ELECT—BRIAN DESALLE

Mr. Brian DeSalle is a Senior Project Engineer with Civiltech Engineering, Inc. in Itasca, Illinois, where he has worked for over six years. He is a registered professional engineer in the state of Illinois. His project experience at Civiltech has focused primarily on traffic signal design and traffic impact studies, and has included traffic simulation and modeling. Brian holds an M.S. in Civil Engineering from Purdue University and a B.S. in Civil Engineering from the University of Missouri at Rolla. He is currently serving as co-chair of the Section's House & Special Events committee.

AFFILIATE DIRECTOR ELECT—TOM HEIN

Mr. Thomas Hein, P.E., serves as the Civil Engineering Manager with ENTRAN and as Project Manager in various projects including intersection design studies, phase 1 projects with IDOT and Cook County, project management services with the Tollway and phase II highway design. Thomas received a Bachelor of Science in Civil Engineering from Valparaiso University in 1993. Thomas has been a member of the Illinois section ITE since 1994. Beginning in 1998 Thomas has been serving as the Ambassador under the Operations Group and in 2006 became the director of the operations group.

NOVEMBER LUNCHEON IN ROCKFORD

The November luncheon was attended by about 50 professionals from the northwest region of Illinois and held jointly by Illinois Section ITE and the Rockford Chapter of the Illinois Society of Professional Engineers. The event occurred at Cliffbreakers Riverside Resort in

Rockford, Illinois on Thursday, November 20. The speakers were Mr. **A.J. Voth** and Dr. **Nancy Holmes** from the Chicago Chapter of Engineers Without Borders, who discussed their experiences building a pedestrian bridge in Guatemala and a water supply project in Mexico.

ITEMs is the official publication of the Illinois Section Institute of Transportation Engineers. Opinions expressed herein do not necessarily reflect official Institute or Illinois Section policy unless so stated. Advertisements do not constitute endorsements of products or services. Submissions of articles, comments, or letters to the editor are encouraged and appreciated.



Dr. Nancy Holmes (left) and Mr Voth and discuss their experiences while working on an Engineers without Borders projects in Central America.



DECEMBER SOCIAL EVENT

BENEFITING THE ILLINOIS SECTION SCHOLARSHIP FUND

Time to pull that bowling ball out of the closet and dust off those multi-colored shoes! No shoes, no ball, you say! No worries, for a mere \$25 per person you too can bowl, eat pizza and drink soda (other beverages at your own cost) with the best Obama-style bowlers around. Bring your spouse, a friend, or your significant other. In a new twist, the Illinois Section will conclude the year with a festive event at the Brunswick Zone lanes at 519 Consumers Avenue in Palatine, Illinois (phone 847-392-8290). To get there by car: Take I-90 to IL Route 53 North to the U.S. Route 14 (Northwest Hwy.) exit. Turn left on U.S. Route 14 eastbound to Consumers Avenue and turn left. Lower your carbon footprint getting there by train: Take the Metra Union Pacific/Northwest line out to the

Arlington Park station. Transportation will be provided from the train station to the Brunswick Zone 5-10 minutes prior to the event. Please let us know in advance if you will be arriving by train so that we can make the necessary arrangements. While the admission charge pretty much just covers the cost of this event attendees are welcome bring items for the auction to be held at the January 24, 2009 Annual Banquet for the benefit of the ITE Scholarship fund. For donation ideas please see the donation form included on page 8. Cash donations are also welcome. Donors who contribute cash or items in excess of \$75 prior to the event, or smaller value items by January 9, 2009 will be acknowledge in print during the banquet. Watch your e-mail for more details. Looks like our US President-elect has started a bowling trend!

PRESIDENT'S MESSAGE (CONTINUED)

On December 16, we will be hosting our Annual Section year end wrap-up with Bowling at the Brunswick Zone in Palatine. Please join us to socialize in a casual environment.

On January 24, 2009, we will have our Illinois Section Annual Banquet at the White Eagle Banquets & Restaurant in Niles. The evening will include dinner, cocktails, installation of the 2009 Section Board for the next year including our new President **Matt Letourneau**. The Section will be awarding two student scholarships and a student paper award, and hold a raffle and live and silent auctions to benefit the Illinois Section Scholarship Fund. The economic times are challenging to say the least. I am confident that we can rise to meet the challenges of these times and consider making a contribution. Please join us for this event to congratulate the new Board and to celebrate Transportation Engineering in the Illinois Section.

Both the Board, and I, are most grateful for all the time, effort, investment and contribution made by all of our Section members in participating in the Section activities and the fundraising efforts for the students. Not only do these efforts help raise needed scholarship funds, but they also build a strong and involved community which is paramount to the success of our profession.

It has been an honor and a pleasure to serve as the President of the Illinois Section for the past year. I wish you all the best!

Amarpal S. Matharu, P.E.

President, Illinois Section, ITE

AASHTO VIDEO ADVANCES LIFE- SAVING STUDY

Approximately 60 percent of nation's highway deaths are caused by lane departure crashes. This type of collision occurs when a vehicle veers from its lane. In May '08 the American Association of State Highway and Transportation Officials (AASHTO) released "Driving Down Lane-Departure Crashes," a study outlining a number of relatively low-cost, systematic approaches that many state departments of transportation are implementing to save lives.

You can watch the video at www.youtube.com/aashtovideo



SPECIAL MEMBERSHIP OFFER FOR PUBLIC AGENCIES

The Illinois Section is pleased to offer a special membership rate to our colleagues in the public sector. The Illinois Section is offering governmental agencies (including universities) annual membership for six persons at \$100 total (over a 40% discount normal membership) with additional each person at \$15 (over a 55% discount). Please consider joining your fellow transportation professionals as an ITE Illinois Section member, and enjoy many benefits:

- **Your agency has a formal relationship with a major international transportation society**
- **Membership Dues at a predictable cost**
- **Agency membership dues provide a significant savings over individual membership dues**

- **Your members receive a free luncheon and recognition at an introduction meeting**
- **You provide a significant employee benefit and enhance your agency's overall professional quality**
- **Quarterly newsletter with technical news, Section information, and job prospects**
- **Participation in committees and councils**
- **Networking with fellow engineering professionals**

You can download the governmental agency application for at http://www.ilite.org/public/membership/membrapp_agency.pdf

ITE TRAFFIC SAFETY AWARD TO FRED RANCK

August 20, 2008, WASHINGTON, DC— **Fred N. Ranck**, safety engineer at the Federal Highway Administration, Olympia Fields, IL, USA, received the Edmund R. Ricker Traffic Safety Individual Award at the Institute of Transportation Engineers (ITE) 2008 Annual Meeting and Exhibit, being held August 17–20, 2008 in Anaheim, CA, USA.

Fred Ranck was recognized for his contributions to the advancement of highway traffic safety throughout his career. He has been a champion promoting safety programs in Arizona, Wisconsin, Illinois, New York, Louisiana and many other

states and is known for being the “safety hound.”

The Transportation Safety Council administers annual awards for outstanding contributions to the field of traffic safety. The Edmund R. Ricker Award is given in two categories: individual and organization. The individual award is given to a person who is recognized as a leader in the field of traffic safety through his/her safety activities in professional organizations, in the community, or in the performance of traffic engineering.

For a complete listing of all of ITE's 2008 award winners, visit the ITE Web site at www.ite.org.

FUTURE CITY COMPETITION - CHICAGO REGION

Nobody can doubt the importance of water and water resources in our world, whether it be clean drinking water or water as a resource for sanitation, irrigation, or fire protection. But as our cities grow and expand, what can be done to conserve and reuse such a valuable resource? Beginning this fall, thousands of middle school students will tackle that specific question in the 2009 National Engineers Week Future City Competition™.

Sponsored by the nation's professional engineering community, Future City aims to stir interest in science, technology, math and engineering among young people. Students work in teams under the guidance of a teacher and a volunteer engineer mentor to design and build a city of tomorrow. They must also conduct research for an essay on a pressing social need. This year, the essay centers on ways to

(Continued on page 5)



FUTURE CITY (CONTINUED)

(Continued from page 4)

improve water use by creating a home system that minimizes the use of municipal or externally supplied water for its daily requirements. At the regional level each team consists of 7th and 8th grade students with no limit on how many students may work on the entire project through the year. Only 3 students will be able to present materials at the regional competition, however.

Future City, the nation's largest engineering education program and among the most popular, students create cities on computers using the SimCity 4 Deluxe software and then build three-dimensional, tabletop models to scale. To ensure a level playing field, models must use recycled materials and can cost no more than \$100 to build. Students also write brief abstracts describing their city and must present and defend their designs at the competition before a panel of engineer judges who test the depth of the teams' knowledge.

Future City Competitions will be held in January 2009 in 40 regions across the country. First-place winners from each qualifying regional competition receive an all-expense-paid trip to the 17th annual Future City National Finals in Washington, D.C., February 16-18, 2009 during National Engineers Week. National grand prize is a trip to U.S. Space Camp in Huntsville, Alabama. More than 30,000 students from 1,100 middle schools are expected to participate nationwide.

The Chicago Area Regional Competition has begun and organizers are actively looking for volunteers to help serve as a mentor or judge for the event. Prejudging of the computer cities and essays is scheduled for Saturday, January 17th, 2009 at HNTB's office (111 N. Canal St., Suite 1250, Chicago) from 8am to noon. Preliminary judging of the computer models will be conducted the day of the competition on January 24th, 2009.

Organizers ask you to review the possible list of judging areas below and fill out a form posted at <http://www.futurecitychicago.org/Volunteer%20opportunities.htm> to indicate where you would like to volunteer. The form can be downloaded in Microsoft Word Format, and then updated and attached to your e-mail response to **Matthew Miller** (mamiller@hntb.com). Please feel free to contact him with any questions. Volunteer positions include"

Preliminary Judge: Serve as a preliminary judge for student's diorama model and presentation on the day of the competition at UIC. The judging will go from 8 a.m. to Noon. You will be asked to arrive early for a small training session and instructions on how to judge.

Essay and Computer Model Judge: Pre-judging for the competition on January 17th, 2008 at HNTB's Chicago office for the computer models, essays and city abstracts. The judging will go from 8 a.m. to Noon. You must check in at the front desk in the lobby and show photo I.D. Breakfast will be provided.

Mentor: Work with a student team to build their model and prepare for the competition. We need engineers from all over the Chicago region to work with the students

Competition Support: At University of Illinois at Chicago Student Center East on January 24, 2009 and are willing do what ever task is needed.

Special Awards Judge: Select which teams meet the criteria for a Special Award on morning of the competition. Most of the special award sponsors typically provide judges but organizers are always looking for extra help with these judges. The Illinois Section ITE is among the twenty groups in this region that sponsors a special award.





PERFORMANCE MEASURES - UNBENDING THE EARMARK

In 1995 the US Congress spent \$10 billion on 1,439 “earmarks”, defined by the US Office of Budget and Management (OMB) as funds provided by the Congress for projects or programs where the congressional direction (in bill or report language) circumvents the merit-based or competitive allocation process, or specifies the location or recipient, or otherwise curtails the ability of the Executive Branch to properly manage funds. According to the nonpartisan Citizens Against Government Waste, earmarks increased to \$27.3 billion for a record 13,997 such projects in 2005. While proponents maintain some good can come out of this long existing practice, opponent maintain the extent to which this practice has recently been utilized has undermined more important priorities identified by local, regional and State officials. If so, how do we as a nation spend our limited capital in a rational manner?

THE REGIONAL INDICATORS PROJECT

The Regional Indicators Project is part of CMAP’s innovative GO TO 2040 comprehensive planning campaign. In order to develop and evaluate strategies for implementing the GO TO 2040 Regional Vision, CMAP is collaborating with The Chicago Community Trust to create indicators for predicting and measuring economic, environmental, social, and cultural variables that affect quality of life. The project is part of the Chicago Metropolitan Agency for Planning’s (CMAP) innovative GO TO 2040 comprehensive planning campaign. The overall purpose of the Regional Indicators Project is to track progress toward achieving the GO TO 2040 Regional Vision. As such, indicators are divided into the major themes identified in the Regional Vision, with equity, sustainability, and innovation woven throughout. Ultimately, the Regional Indicators Project will consist of about 180 key indicators used for tracking purposes.

Considerable time has been devoted to identifying tracking indicators. CMAP contracted with independent firms to investigate and evaluate existing datasets to determine which will be most useful for measuring indicators. CMAP’s working committees identified potential indicators for their topic areas, including transportation, land use, environment and natural resources, freight, housing, human services, and economic development. CMAP will continue to work with subject area experts and stakeholders to refine the list through 2009.

The preliminary tracking indicators list, with appendices that show updated recommendations from subject area experts, can be found on-line at <http://www.goto2040.org/WorkArea/showcontent.aspx?id=11360>. The CMAP Board will vote on whether to approve this preliminary list at its December 10, 2008 meeting. It has already been endorsed by the CMAP Transportation Committee, Planning Coordinating Committee and MPO Policy Committee.

GO TO 2040 SCENARIO EVALUATION

Following the indicators selection, the centerpiece of the GO TO 2040 campaign will be a scenario evaluation process. The scenario selection will depend on a reliable method that uses indicators to judge the effectiveness of different policies or investments relative to the regional vision. For example, because a strong economy is important to our future, CMAP and its partners will develop indicators that measure economic performance, such as unemployment rates or new business start-ups.

DASHBOARDS FOR DECISION MAKERS

In addition to the pivotal role it will play in development of the GO TO 2040 plan, the comprehensive indicators system will be made available into a publicly-accessible tool for regional decision-makers. Utilizing a user-friendly web interface, users will be able to create a





PERFORMANCE MEASURES (CONTINUED)

personalized “dashboard” of indicators most important to them. Like gauges on a car dashboard, these indicators will be based on real-time data that can be viewed with the click of a mouse. There will also be tools to map, tabulate, and analyze them for different geographic scales — whether region-wide, or locally specific. In addition to getting regional stakeholder feedback on the indicators for the Plan, the workshops will provide an opportunity for these potential users to weigh in on which indicators will be most valuable to them on a dashboard.

INDICATOR SELECTION CONSIDERATIONS

CMAP is using the following criteria to determine which indicators will be selected.

Importance. The indicator measures an aspect of the region’s vision which most people would agree is important.

Policy Relevance. The indicator measures an aspect of the region’s vision which can achieve positive change through public decision-making and policies at the regional, county or municipal level.

Responsiveness. The indicator responds relatively quickly and noticeably to real changes in the region, as revealed by changes in the direction or slope of the indicator’s trend line.

Validity. If the indicator’s trend line moves either upward or downward, most people would agree on whether the region is improving or declining.

Understandability. The indicator measures an aspect of the region’s vision in a way that most citizens can easily understand and interpret, in relation to their own lives.

Representativeness. Taken together, the indicator set, and the indicators within each vision theme, cover all the major dimensions of the region’s quality of life.

Clarity. The indicator uses clear measures that filter out extraneous factors (e.g., dollar indicators are reported in deflated, constant dollars; per-person rates are used where appropriate to factor out population growth; and raw numbers are used where total magnitudes are important).

Outcome Orientation. Where possible, the indicator measures a regional outcome — the actual condition of the vision (e.g., the crime rate). Alternatively, it measures an outcome of the region’s response to an issue (e.g., police response time), rather than the input of the response itself (e.g., number of police officers).

Asset Orientation. Where possible, the indicator measures a positive aspect of the region’s quality of life (community’s assets rather than its liabilities), so that an increase in the indicator’s trend line reveals community improvement (e.g., the high-school graduation rate rather than the dropout rate).

Anticipation. The indicator anticipates future quality of life conditions rather than reacting to past trends. A “leading” indicator (e.g., cigarettes sold) is more useful than a “lagging” indicator (e.g., lung-cancer deaths) because it allows a proactive community response.

The use of regional indicators is but one example of how performance measures can be used as a comprehensive regional planning process. While we as transportation planners and engineers may have a keen interest only a few of the indicators, the dashboard for decision makers demonstrates the importance of the connectivity between many of those indicators (e.g. transit oriented development to housing, land use, economy and freight travel time to transportation and economic competitiveness). Perhaps future legislation will enable performance indicators as the primary means for allocating funds.

AASHTO’S “I TOLD THE PRESIDENT”

On November 25th, the American Association of State Highway and Transportation Officials (AASHTO) launched a new campaign that will give travelers an opportunity to share their views on what the new President and Congress should know about Transportation. State DOTs across the country will be encouraging citizens to post videos about what is happening in their community. AASHTO will also be posting comments from “person-on-the-street” interviews being conducted over the next months. Continuing through the Inauguration, the traveling public is urged to go to www.IToldThePresident.org and post comments and videos about their transportation concerns.



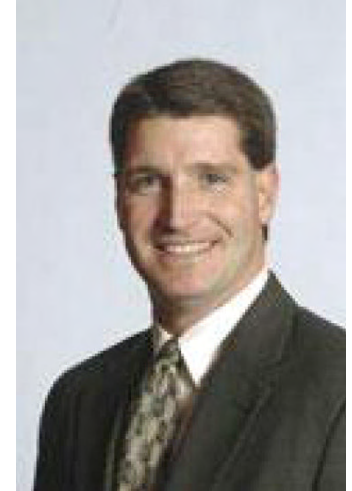
DISTRICT SECRETARY-TREASURER ELECT

The Congratulations to **Douglas Ripley** who was elected the 2009 Midwestern District Secretary Treasurer. As operations manager of Traffic Control Corporation's Iowa office, Doug works with governments and professionals at all levels on transportation projects. Doug states "An organization is only as strong as the membership, and the membership is only as strong as those willing to make the effort to improve the organization."

Doug has been actively involved in ITE though 7

years on the MOVITE Board holding the positions of President, Vice President, Secretary, Treasurer, and is currently Past President. Doug has also served on awards committees and a Technical Research committee through ITE International.

The District appreciates Michael Wahlstedt's participation in the campaign and looks forward to his continued involvement in ITE. In an election campaign with two excellent candidates, unfortunately, only one candidate prevails.



Midwestern District Secretary-Treasurer Elect Douglas A. Ripley

IDOT AND WISDOT LEADERS NAMED AMTRAK DISTINGUISHED STATE PARTNERS

CHICAGO - Leaders of the railroad divisions of the Illinois and Wisconsin state transportation departments were recently honored by Amtrak as "Distinguished State Partners" as part of annual Presidential Safety and Service Awards (PSSA).

George Weber, Acting Chief, Bureau of Railroads, Illinois Department of Transportation, and **Ron Adams**, Director of Rail and Harbors, Wisconsin Department of Transportation, were personally congratulated by Amtrak President and CEO **Alex Kummant** at a ceremony in Chicago.

PSSA award winners are nominated by their peers and their accomplishments are considered by a national committee of Amtrak employees.

GEORGE WEBER NOMINATION

"George's efforts on behalf of passenger rail have contributed to a robust, flourishing, state-supported route network. Frequent and convenient passenger rail service on the three state-sponsored corridors is the result of his hard work to ensure that Illinois taxpayers get the most value for their expenditures," said the nomination for Weber, a 17-year veteran Illinois state employee.

"Amtrak has completed two new route studies

per George's request, and is making progress on a third. These new routes have the potential to add as many as 200,000 annual passengers. George is also providing leadership in developing innovative ideas to address Amtrak's equipment shortage and he continues to push for funding for a signal system that allows for 110 mph operation on the Chicago-Springfield route."

RON ADAMS NOMINATION

"Ten years ago, rail travel in Wisconsin was rarely mentioned as a viable alternative to the freeways and the airports, but after much investment, time and attention by the state of Wisconsin — and Ron in particular — rail travel is now the affordable alternative. Passengers are greeted by new stations, automated ticketing machines, accessible platforms, parking lots and waiting areas," said the nomination for Adams, a 24-year veteran Wisconsin state employee.

"There simply is no comparison between the *Hiawatha Service* of the past and what it has become today and will evolve into tomorrow. Ron has overseen the expansion of the *Hiawatha Service* to the current level of seven daily roundtrips, and he continues to work with the host railroads and Amtrak to develop support for more frequency increases."





PERSONAL RAPID TRANSPORTATION

No cars, trucks, or SUVs in sight. Introducing the most sophisticated transportation system on the horizon—for Masdar City, Abu Dhabi.

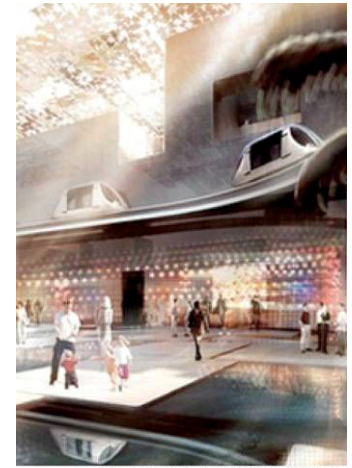
Imagine having an accident-free, sophisticated driverless system to move you around town whenever you want, whenever you want. In Masdar, it will be as simple as pressing a button and off you go in a quiet, air-conditioned PRT (personal rapid transportation) unit. Each electric PRT will navigate flat roads safeguarded with guide-way curbs on each side. The PRT will link and connect throughout the city from one destination point to another. In addition, the system will run twenty-four hours a day, seven days a week.

Once completed, Masdar will be the world's first fully-sustainable eco-city, implementing cutting-edge transportation technology to help meet the future needs of Masdar's modern zero-waste and 100 percent renewable energy lifestyle.

Envisioning a society free of vehicle pollution, traffic congestion, and long commutes may seem light years away, but the first thirteen of approximately 3,000 PRT units will be up and running in August of 2009. The remaining units will be phased in over the next six years.

"We are helping to showcase to the world the many facets of sustainability, and at the same time, laying the groundwork to reinvent mainstream urban transportation," said **John Mogge**, CH2M HILL's transportation technical lead for the Masdar project.

"This unique transportation system is a prototype for future PRTs in urban situations and really demonstrates CH2M HILL's dedication to sustainability" Mogge said. "We are committed to improving the environment and being the leader in sustainable technology and implementation in the industry."



Courtesy of Foster & Partners/Masdar

CHICAGO RECEIVES \$1.157 BILLION FOR METERED PARKING BID

Mayor Richard M. Daley today announced the City of Chicago received a winning bid of \$1.157 billion from Chicago Parking Meters, LLC, for a 75-year concession agreement to operate Chicago's metered parking system made up of approximately 36,000 parking spaces.

The winning bidder consists of Morgan Stanley Infrastructure Partners A Sub LP (76% ownership), Morgan Stanley Infrastructure Partners LP (23%) and several other entities sharing 1% ownership. LAZ Parking will serve as the operator for Chicago Parking Meters, LLC.

Mayor Daley said he proposes allocating the nearly \$1.2 billion in net meter proceeds into four distinct funds, including:

- **\$400 million in a long-term reserve/revenue replacement fund;**
- **\$325 million in a mid-term budget relief fund to help balance city budgets through 2012, consistent with the 2009 budget plan;**
- **\$100 million human infrastructure fund to support**

for programs helping those most in need; and

- **The balance - approximately \$324 million - in a budget stabilization fund that may be used to help bridge the period until the nation's economy begins to grow again.**

As part of this agreement, the City will implement graduated meter rate increases over a period of five years that will bring rates closer to market level. After that, any increases will be subject to the approval of the city council and are expected to be at the rate of inflation.

These increases will be the first in more than 20 years for more than 25,000 of the 36,000 meters.

This agreement also mandates the private operator to make system upgrades in the near future that will provide cashless payment options far sooner than the city would be able to complete. And by the middle of 2011, all meters must have both cash and cashless payment options.

A PEEK AT PRTS

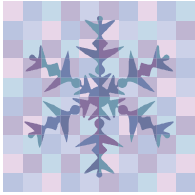
There will be three body types: one carries passengers; one for goods; and one for recyclables.

The 25-mile-per-hour (40-kilometers-per-hour) passenger PRT will comfortably hold six people.

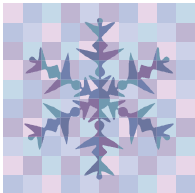
There will be 83 pick-up/drop-off stations throughout Masdar, each one no more than 200 meters away from any urban location.



Stelio Pay and Display terminals are becoming commonplace in Chicago's loop. The terminal features service for multiple spaces, credit card payment, a solar power panel, and wireless and internet based communications for terminal management.



**SILENT AND LIVE
AUCTION:**



ILLINOIS SECTION

Institute of Transportation Engineers

2009 Annual Banquet
Donations to the Student Scholarship Fund

In order to raise money for the ITE scholarship fund, a silent and live auction will be held during the 2008 Annual Banquet. If you have any items you would like to donate, please contact Josh Harris at:

Phone: (630) 735-3958, Fax: (630) 773-3975

E-mail: jharris@civiltechinc.com

Donated items could include:

- **Entertainment (Tickets to plays, Music Concerts, etc.)**
- **Gift Certificates (Area Stores, Hotels, Restaurants, and Museums, etc.)**
- **Sports (Signed Memorabilia, Tickets to Sox, Bears, Fire, Cubs, etc.)**
- **Technology (I-Pod, MP3 players, DVDs, etc.)**
- **Toys and Games (PS3, X-Box 360, Wii, Disney items, etc.)**
- **Gifts for Him or Her (Purses, Brief Cases, PDA's, Apparel Items, Gift Baskets, etc.)**

Please no old controllers or street signs. The higher value items donated will be part of the live auction.

Cash donations are also welcome. Please make checks payable to ITE Illinois Section.

ITE is a non-profit organization. The section's FEIN number is 03-3237057. All donations are fully tax deductible and support the student scholarship fund.

Thank you.

ITEM DONATED:

NAME/COMPANY:

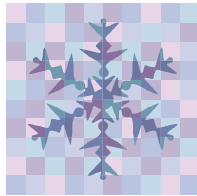
PHONE NUMBER/E-MAIL:

APPROXIMATE VALUE OF ITEM (OPTIONAL):



ILLINOIS SECTION

Institute of Transportation Engineers



2009 ANNUAL BANQUET

*JOIN YOUR FRIENDS, COLLEAGUES, AND FELLOW
PROFESSIONALS FOR A FUN SATURDAY NIGHT*

FEATURING:

- **MASTER OF CEREMONIES JOEL CHRISTELL**
- **STUDENT PAPER AWARD**
- **STUDENT SCHOLARSHIP AWARD**
- **LIVE AUCTION**
- **SILENT AUCTION**
- **INSTALLATION OF NEW BOARD MEMBERS**
- **RAFFLE AND DOOR PRIZES**
- **MR. KENNETH VOIGT, PRESIDENT, ITE INTERNATIONAL**
- **MR. STEVE MANHART, DIRECTOR, MIDWESTERN DISTRICT**

DATE:

SATURDAY, JANUARY 24, 2009

VENUE:

WHITE EAGLE BANQUETS AND RESTAURANT
6839 N. MILWAUKEE AVENUE
NILES, IL 60714

COST:

\$40.00 PER PERSON/\$15 STUDENTS IN ADVANCE OR AT THE DOOR

TIME:

6:00 P.M. – RECEPTION/CASH BAR
7:00 P.M. – DINNER

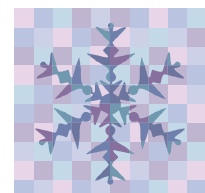
Family-Style Dinner

Menu to be Announced

Vegetarian Selections Available

CONTACT:

Brian DeSalle, (630) 735-3956
bdesalle@civiltechinc.com





**2009 Annual
district
annual
meeting and conference**



**Save dates in
June 17, 18, and 19, 2009
Wisconsin Dells, WI**



PROFESSIONAL DEVELOPMENT SEMINARS

IRTBA-IDOT MATERIALS MANAGEMENT COURSE

Wednesday to Friday, January 14 to 16, 2009. Must be a member of IRTBA and participation is limited to 2 persons per firm. This course will be a required prerequisite for IDOT Phase III projects starting with IDOT PTB 151. Credits 20 PDH IRTBA Member Price: \$495

ITE WEB SEMINARS

Registration for the ITE web seminars listed below closes 3 days prior to course date. Visit <http://www.ite.org/education/webinars.asp> to register. A copy of the presentation and a student supplement are provided two days prior to the web seminar.

TRAFFIC OPERATIONS PRACTITIONER SPECIALIST REFRESHER COURSE SUITE

Tuesday to Thursday, January 6-8 and January 20-22, 2009 2:00 p.m. – 3:30 p.m. CST Credits 9PDH/.9 IACET ITE Member Price: \$750/ Nonmember Price: \$938\$781/Full Time Student: \$350

TRAFFIC SIGNAL OPERATIONS SPECIALIST REFRESHER COURSE SUITE

Thursdays, January, 29 through February 26, 2009 2:00 p.m. – 3:30 p.m. CST Credits 7.5 PDH/.75 IACET ITE Member Price: \$625/ Nonmember Price: \$781/Full Time Student: \$313

PROFESSIONAL TRANSPORTATION PLANNER REFRESHER COURSE SUITE

Wednesdays, January, 21 through February 25, 2009 1:00 p.m. – 2:30 p.m. CST Credits 9PDH/.9 IACET ITE Member Price: \$750/ Nonmember Price: \$938\$781/Full Time Student: \$350

PTOE REFRESHER COURSES

Tuesdays, January 27 through February 24, 2009, 2:00 p.m.–3:30 p.m. CDT Credits 7.5 PDH/.75 IACET ITE Member Price: \$625/ Nonmember Price: \$781/Full Time Student: \$313

INTRODUCTION TO HIGHWAY SAFETY SERIES

February 3-26, 2009, Noon –1:30 p.m. CDT Credits 13.5 PDH/1.4 IACET ITE Member Price: \$1000/Nonmember Price: \$1250/Full Time Student: \$500

REFER A FRIEND

The Illinois Section will send a complementary issue of ITEMS to your friend or business acquaintance who may be interested in joining ITE. E-mail the contact information to your ITEMS editor at: mrinnan@ekmail.com or fax the information to 312.251.3015. The contact will be provided membership information and acknowledgement of your referral.

CALL FOR PAPERS

50TH ANNUAL TRANSPORTATION RESEARCH FORUM

The Forum will be held March 16-18, 2009 at the Doubletree Hotel - Lloyd Center in Portland Oregon. The 2009 conference themes include:

- Transportation and the Environment
- Ports and International Freight
- Transportation Finance
- Public Transportation
- Air Transportation

Three types of submissions are solicited:

Paper Sessions – Papers should be original manuscripts which are timely in scope and germane to transportation. Papers can be either empirical or theoretical research on transportation problems and issues. Issue papers are welcome which address current issues that affect or will affect individual transportation modes. All papers should potentially have practical application to transportation problems, issues, or policies.

Panel Sessions – Panel session proposals should deal with some aspect of transportation policy, issues, controversies, new develop-



CONFERENCE CALL

A list of conferences is provided for your consideration:

SOLES AND SPOKES WORKSHOP

Thursday, December 11, 2008 at the offices of Chicago Metropolitan Agency for Planning (CMAP), Suite 800 of the Sears Tower, 233 South Wacker Drive, in Chicago, IL. <http://www.cmap.illinois.gov/WorkArea/showcontent.aspx?id=11616> for more information.

TRB 88TH ANNUAL MEETING

Sunday to Thursday, January 11 to 15, 2009 at the Marriott Wardman Park, Omni Shoreham, and Hilton Washington Hotels in Washington, D.C. <http://www.trb.org/meeting/> for more information.

CONEX/WISCONSIN NORTHERN ILLINOIS

Wednesday & Thursday, January 28 & 29, 2009 at the Wisconsin Exposition Center at the State Fair Park, West Allis, Wisconsin. Visit <http://conexshows.com/conwi/index.po> for more information.

ATSSA'S 39TH ANNUAL CONVENTION AND TRAFFIC EXPO

Sunday to Thursday, February 1 to 5, 2009 San Jose McEnery Convention Center, San Jose, CA, <http://www.atssa.com> or call 800/272-8772 for more information.

CALL FOR PAPERS (CONTINUED)

(Continued from page 13)

ments, etc., preferably related to one of the conference themes. Panel sessions should include three or four speakers and a moderator.

Poster Sessions — Posters should address research being conducted on some aspect of transportation, preferably related to the conference themes.

ITE 2008 TECHNICAL CONFERENCE AND EXHIBIT

Sunday to Wednesday, March 22 to 25, 2009 at the Phoenix Convention Center, Phoenix, AZ. For more information watch the web site at <http://www.ite.org/meetcon/index.asp>.

IMSA (INTERNATIONAL MUNICIPAL SIGNAL ASSOCIATION) AND APWA ILLINOIS CHAPTER COMBINED CONFERENCE

Monday to Friday, April 27 to May 1, 2009 at the Peoria Civic Center, Peoria, Illinois. For Additional Information call Andy Bugos, IMSA Conference Management at 309-693-9667 ext 18 or email him at rnbsales@aol.com.

WTS ANNUAL CONFERENCE

Wednesday to Friday, May 20 to 22, 2009 in Seattle, Washington. Watch <http://www.wtsinternational.org/SecondaryTemplate.aspx?id=5378> for more information.

ITE MIDWESTERN DISTRICT ANNUAL CONFERENCE

Wednesday to Friday, June 17 to 19, 2009 at the Kalahari Resort, Wisconsin Dells, Wisconsin. Watch <http://www.midwesternite.org/> for more information.



KEEP YOUR MEMBERSHIP INFORMATION CURRENT...

...by using the Change of Personal Information Form on the Illinois Section website at <http://www.ilite.org/public/membership/ChgInfo.pdf>

Submissions are due December 15, 2008. Instructions can be found online at <http://www.trforum.org/callpapers/> or by calling B. Starr McMullen at (541) 737-1480.

IBTTA INCIDENT MANAGEMENT, SAFETY AND SECURITY SUMMIT

This summit will be held July 19-21, 2009 at the Westin Tabor Center in Denver Colorado. The focus is on the most effective tools and



CALL FOR PAPERS (CONTINUED)

(Continued from page 14)

methods to promote toll facility safety and security, to maintain operations in the face of disruption, and to communicate with customers what is being done to respond and recover.

Main Topics:

- **The Role of Engineering and Maintenance in Prevention and Safety**
- **Best Practices in Emergency Response**
- **Crisis Management During Special Events, Emergency Evacuation, and Acts of Terror**
- **Training and Equipment for Incident Management Response Teams**
- **Communications Methods and Tools for Incident Management, Safety, and Security**

The last day to submit an abstract for this meeting is January 2, 2009. Visit the conference webpage at <http://www.ibtta.org/Events/content.cfm?ItemNumber=3618>. Online abstract submission can be made at <http://www.ibtta.org/Events/content.cfm?ItemNumber=1862&navItemNumber=884>

IBTTA 77TH ANNUAL MEETING AND EXHIBITION

IBTTA's Annual Meeting and Exhibition is the most significant gathering of toll industry professionals and business partners in the world. Held September 13-16, 2009 at the Hyatt Regency in Chicago Illinois, the meeting will bring together more than 1,000 toll agency professionals for 3 days of networking, best practices and critical innovations in toll industry finance, marketing, technology, customer service, environmental stewardship, operations, maintenance and related issues.

Main Topics:

- **New Paradigms in Transportation Funding**
- **Climate Change and Sustainability**
- **US Federal Transportation Reauthorization**
- **New Ownership and Operational Models in Transportation**

- **Intelligent Transportation Systems**
- **Managing in Volatile Economic Times**

Special Features of this Meeting:

Attendees of this meeting include C-level executives of transportation organizations and associations, toll agency Board members and senior level management in finance, operations and marketing, elected officials and many toll industry business partners. The opening event will be held at the Chicago Art Institute, in walking distance from the hotel. Other features of this meeting include an expansive exhibit hall with more than 120 available booths, technical and leisure tours, and the 2009 Toll Excellence Awards Ceremony. * IBTTA's Board of Directors and Governance Fall meetings precede this meeting

The last day to submit an abstract for this meeting is February 1, 2009. Visit the conference webpage at <http://www.ibtta.org/Events/content.cfm?ItemNumber=3620>. Online submission can be made at <http://www.ibtta.org/Events/content.cfm?ItemNumber=1862&navItemNumber=884>

IBTTA SUSTAINABILITY, SOCIAL RESPONSIBILITY, ENERGY CONSERVATION AND FALL MAINTENANCE CONFERENCE

This conference will be held October 4-6 at the Hilton St. Louis, in St. Louis Missouri. Tolling and road pricing not only generate funds for highway construction and maintenance, they also promote efficient and sustainable use of the transportation system.

Main Topics:

- **Asset Management and Total Cost Methodologies**
- **Market Pricing of Transportation**
- **Land Use Policy**
- **Corporate Social Responsibility: Protecting the Environment and Giving Back**

(Continued on page 20)



Open Road Tolling (ORT) and cash lanes at the Meyers Road Toll Plaza on the Illinois Tollway's Reagan Memorial Tollway (I-88)



SECTION CALENDAR

DECEMBER 2008

SUN	MON	TUE	WED	THU	FRI	SAT
	1	2	3	4	5	6
7	8	9	10	11	12	13
14	15	16	17	18	19	20
21	22	23	24	25	26	27
28	29	30	31			

JANUARY 2009

SUN	MON	TUE	WED	THU	FRI	SAT
				1	2	3
4	5	6	7	8	9	10
11	12	13	14	15	16	17
18	19	20	21	22	23	24
25	26	27	28	29	30	31

FEBRUARY 2009

SUN	MON	TUE	WED	THU	FRI	SAT
1	2	3	4	5	6	7
8	9	10	11	12	13	14
15	16	17	18	19	20	21
22	23	24	25	26	27	28

SCHEDULE OF EVENTS

- December 4 - Highway Safety Manual Course at the DuPage County Division of Transportation, 421 N. County Farm Road, Wheaton, IL. For more information contact Chris DeRosia at 312.853.0820 ext. 1303 or via email at cld@metrotransportation.com
- December 10 & 11 – Midwestern District ITE Board Meeting at the Radisson Hotel, Waukesha, WI
- December 10 & 11 – Roundabout Design Workshop, at the Sheraton West Des Moines Hotel, West Des Moines, IA. For more information, visit www.roundabouts.cc, or call NE ROUNDABOUTS at 518-674-8350 (office) or 518-424-5933 (cell).
- December 16 – Illinois Section 3rd Annual Networking and Holiday Get Together, Brunswick Zone, Palatine, IL.
- January 11 to 15 - Transportation Research Board 88th Annual Meeting, Washington, DC
- January 24 – Illinois Section Annual Awards Banquet at The White Eagle, Niles, IL.
- February 12 (TENTATIVE) – Illinois Section Student Luncheon, Illinois Institute of Technology.
- February 15 to 21 – National Engineers Week
- February 16—ITEMS Deadline
- February 20 – Washington Awards Banquet, Chicago, IL

**DO YOU HAVE
EMPLOYMENT
OPPORTUNITIES?**

Advertise your job opening in *ITEMS*. For information contact:

William Eidson
847.823.0500
weidson@cbbel.com

TRB 88th Annual Meeting
January 11-15, 2009
Washington, DC



ILLINOIS SECTION '09 - '10 PLANNER

Please note all dates, locations, and topics are tentative. Check the section calendar in future editions of ITEms or on line at www.ilite.org to verify details.

2009

March 19	Monthly Luncheon at Downtown Chicago Maggiano's
March 22 - 25	TE Technical Conference and Exhibit , Phoenix AZ
April 16	Monthly Luncheon at Downtown Chicago Maggiano's
May 21	Monthly Luncheon at Downtown Chicago Maggiano's
June 11	Suburban Maggiano's – Joint Meeting, ASCE (Tentative)
June 17-19	Midwestern District Annual Conference hosted by the Wisconsin Section
July 16	Golf Outing – Joint Outing with the Irish Engineers Group
July 23	Location TBA, Joint Meeting, WTS
August 9-12	ITE Annual Meeting and Exhibit , San Antonio TX
September 17	Holiday Inn, Naperville – Joint Meeting (Dinner), ISPE
October 22	Monthly Luncheon at Downtown Chicago Maggiano's
November 19	Cliffbreaker's, Rockford
December 17	Year End Wrap-up (details to be provided)

2010

January 23	Annual Awards Dinner at The White Eagle, Niles, IL
February 19	Engineer's Week Washington Banquet

**BAXTER
WOODMAN**
Consulting Engineers

**Providing Quality
Transportation Design
and Construction
Services since 1946.**

Offices in:
Crystal Lake, Mokena,
DeKalb, Grayslake,
Plainfield, Itasca, and Rockford, IL
www.baxterwoodman.com

BROWN
Traffic Products, Inc.
MERGING INNOVATION, TECHNOLOGY & SERVICE

Call: 800.888.7078

visit us on the web at: www.browntraffic.com

736 Federal Street, Suite 2312 • Davenport, Iowa 52803

JACOBS

Jacobs:
Leaders in
delivering value.

www.jacobs.com
Offices Worldwide

CORPORATE ADVERTISEMENTS

Outperformance™
in engineering, construction, and operations



8501 W. Higgins Road, Suite 300 • Chicago, IL 60631-2801
Tel: 773.693.3809 • Fax: 773.693.3823
www.ch2mhill.com

TECHNOGRAPHIC © 2006 CH2M HILL



- Water Resources
- Stormwater Management
- Environmental
- Transportation
- Structural
- Mechanical/Electrical
- Surveying
- Construction
- Design/Build
- Municipal Engineering
- Site Development
- Expert Witness Testimony

9575 W. Higgins Rd., Ste. 600 | Rosemont, IL 60018
(847) 823-0500 | www.CBBEL.com

Office Locations:
IL: Rosemont • New Lenox • St. Charles • Peoria
IN: Indianapolis • Crown Point • South Bend • Fort Wayne • Columbus

Itasca Chicago McHenry County



Innovative planning, design and construction solutions



www.civiltechinc.com tel: 630.773.3900 fax: 630.773.3975
An Employee-Owned Business

creative • cost effective • environmentally sensitive solutions.

Transportation Planning and Design • Traffic Engineering • Environmental Services • Railroad Design




11422 Miracle Hills Drive Suite 410
Omaha, NE 68154 402.445.4405
www.fhueng.com

Want to Advertise?

Place your business card in *ITEMS*.
Contact:

William Eidson
847.823.0500
weidson@cbbel.com



SOLUTIONS

- Transportation
- Waste/Waste Water
- Environmental and Resource Management
- Construction Management

Chicago
773.380.7900



ONE COMPANY
Many Solutions™

www.hdrinc.com



Hampton Lenzini and Renwick, Inc.

Civil Engineers
Structural Engineers
Land Surveyors

380 Shepard Drive
Elgin, Illinois 60123-7010
847-697-6700


CORPORATE ADVERTISEMENTS

COMPREHENSIVE CONSULTING SERVICES

- Aviation
- Bridges
- Construction Services
- Environmental Engineering
- Program Management
- Technology
- Highways
- Freight Rail
- Transit
- Urban Design & Planning
- ITS
- Electrical

111 North Canal Street
Suite 1250
Chicago, IL 60606

Telephone (312) 930-9119
Facsimile (312) 930-9063
www.hntb.com

Innovation for better mobilitysm

Vantage Video Detection Systems

1515 S. Manchester Avenue
Anaheim, California 92802
Offices Nationwide

Phone: (847) 687-9146
www.iteris.com
> see roadway sensors



Traffic Engineering
Transportation Planning
Signal Systems/Design

METRO TRANSPORTATION GROUP, INC.

3100 W. Higgins Road, Ste. 100
Hoffman Estates, IL 60195-2093
Telephone: 630.213.1000
Facsimile: 630.213.3227

www.metrotransportation.com



TELVENT www.telvent.com

- ITS Planning & Consulting
- Tunnel Control
- Freeway Management
- Urban Mobility Management
- Traveler Information
- Toll Collections

70 W Madison St., Ste 1400, Chicago, IL 60602
Chicago: 312-214-3280
St Louis: 314-640-3123

URS

Traffic Engineering / ITS
Transportation Design and Construction

100 South Wacker Drive, Suite 500
Chicago, Illinois 60606
312.939.1000
www.urscorp.com

Construction Engineering Surveying
Plan Review/Inspection Brownfields
Transportation Environmental
Municipal Parks & Recreation
Structural Stormwater Management



THE VISION TO TRANSFORM
WITH EXCELLENCE!

ILLINOIS | COLORADO | ARIZONA | INDIANA | V3CO.COM | 888.707.2779



ENGINEERS
PLANNERS
ECONOMISTS

WilburSmith
ASSOCIATES

801 Warrenville Road
Suite 260
Lisle, IL 60532
(630) 434-8111
(630) 434-8163 fax
www.wilbursmith.com

Offices Worldwide



CALL FOR PAPERS (CONTINUED)

(Continued from page 15)

- **HOT Lanes, Traffic Demand Management, and Congestion Pricing**
- **Cost of Deferred Maintenance**
- **Alternative Fuels and Transportation as a Utility**

The last day to submit an abstract for this conference is March 1, 2009. Visit the conference webpage at <http://www.ibtta.org/Events/content.cfm?ItemNumber=3622>. Online abstract submission can be made at <http://www.ibtta.org/Events/content.cfm?ItemNumber=1862&navItemNumber=884>

INDUSTRY NEWS

PETE GODOWSKI RETIREMENT

Chicago, IL, October 31. The following message was received from Mr. Peter Godowski of the Cook County Highway Department. "It is with mixed emotions that I want to let you know that I will be retiring from the Cook County Highway Department. My last day will be on February 20, 2009. My hope is that I will have some good years with my beautiful wife, Jeanne and the rest of my family and friends.

It has been an interesting career which has lasted 40 years with 2 different governmental agencies. I have been blessed to work with many talented engineers and non-engineers. There are so many people I would like to thank and I do not know where to start. Thank you ALL. Many of you I have know for many years and some of you not so long but it was always my pleasure to try to work with you and keep our projects on schedule.

As many of you know, I worked 34 ½ years for the Illinois Department of Transportation (IDOT) and retired there in 2002. It is hard to believe that I have been working at the County for nearly 6 years. Time is flying too quickly.

Maybe our paths might cross again some day?"

An after work retirement party is being planned in February 2009 (not on a Friday) . If you wish to attend please call Gwendolyn Ogburu at (312) 603-1660 if you would like to attend.

JEFFREY S. DAILEY TO FILL ILLINOIS TOLLWAY EXECUTIVE DIRECTOR POSITION

Downers Grove, IL, Oct 22. Illinois Tollway Board of Directors Chairman John Mitola today recommended Jeffrey S. Dailey be considered to fill the position of Executive Director for the Illinois Tollway.

Dailey previously served as Chief Engineer at the Illinois Tollway from 2004-2007. His expertise was instrumental in the development and passage of the Tollway's \$6.3 billion Congestion-Relief Program - Open Roads for a Faster Future. Designed to benefit the more than 1.4 million motorists who travel the Illinois Tollway daily, the program now in its fourth year, includes work underway to rebuild/restore the 286-mile system and widen critical areas of the system, as well as completed projects including the systemwide conversion to Open Road Tolling, and construction of the 12.5-mile South Extension of the Veterans Memorial Tollway (I-355) into Will County.

Chairman Mitola will submit Dailey's name to the Illinois Tollway Board of Directors for a formal vote at the October 30, 2008 Board Meeting. If approved, Dailey's tentative start date would be November 19, 2008.

"I'm proud to support and nominate Jeff as our next Executive Director," Mitola said. "His proven leadership as Chief Engineer brought us Open Road Tolling and the South Extension of the Veterans Memorial Tollway (I-355) – both on schedule and on budget – and I'm excited to bring his experience back to Illinois."

Mitola said as a professional engineer Dailey is

(Continued on page 21)



MORE INDUSTRY NEWS

(Continued from page 20)

a natural choice to head the Illinois Tollway, bringing expert knowledge and credentials to complete the current \$6.3 billion Congestion-Relief Program and implement the recently announced \$1.8 Phase Two – Tomorrow's Transportation Today.

Currently, the Assistant Executive Director of Project Delivery for the North Texas Tollway Authority, Dailey has been overseeing the delivery of all new corridor projects and major improvements to the existing NTTA system. Prior to working at the Illinois Tollway, Dailey held county and municipal executive level engineering and management positions in several metropolitan areas, including Columbus, Ohio; Indianapolis, Ind.; as well as in DuPage County and Kane County in Illinois.

VOTERS OVERWHELMINGLY APPROVE BALLOT INITIATIVES FOR INFRASTRUCTURE

Expanding and repairing transportation infrastructure was a big winner on Election Day as voters in other parts of the nation approved more the \$71 billion in new revenue.

The three largest nationwide infrastructure ballot initiatives that passed were:

- **a \$10 billion statewide bond measure in California to provide initial financing for a high-speed rail system;**
- **a half-cent sales tax in Los Angeles County to raise \$40 billion for transit and road projects;**
- **a sales tax increase in the Seattle region to fund \$17.8 billion worth of transit projects over the next 20 years.**

In Rhode Island, voters also approved a measure to allow the state to borrow \$87 million for transportation infrastructure improvements. Its passage makes the state eligible for \$436 million in matching federal funds for transportation.

AASHTO NAMES NEW PRESIDENT

Pennsylvania's Transportation Secretary, Allen D. Biehler, P.E., was elected as the new AASHTO President on Monday, with Larry "Butch" Brown, Executive Director of the Mississippi Department of Transportation, chosen as Vice President.

Biehler served as AASHTO Vice President for the past year, and chaired AASHTO's Authorization Steering Committee which developed the association's recommendations for the next highway and transit bill.

Biehler has identified three emphasis areas for the association in 2009:

- **authorization of a new federal surface transportation program;**
- **progressing to sustainability to address energy security and climate change; and**
- **launching the development of a multi-model freight strategic business plan.**

Currently, Biehler serves as President of the Northeastern Association of State Transportation Officials and is a member of the Special Committee on Commissioners and Boards. He holds a degree in civil engineering from the University of Pittsburgh and a Master's equivalent certificate in transportation from Yale University.

Brown is a longtime businessman and the former mayor of Natchez, Mississippi. He chairs AASHTO's Standing Committee on Ports and Waterways and serves on the Special Committee on Intermodal Transportation and Economic Expansion. He is a graduate of the University of Southern Mississippi with degrees in management and marketing, and served there as an instructor for seven years.

Carlos Bracerros, Deputy Director of the Utah Department of Transportation, continues to serve as the AASHTO Secretary-Treasurer.

We are on the web!

www.ilite.org



ILLINOIS SECTION OFFICERS AND COMMITTEES

OFFICERS

President	Amarpal Matharu	(773) 693-3809	Amatharu@CH2M.com
Vice President	Matt Letourneau	(312) 424-5424	Matthew.Letourneau@jacobs.com
Secretary	Tim Sjogren	(630) 213-1000	tps@metrotransportation.com
Treasurer	Kim Kolody-Silverman	(773) 693-3809	kkolody@ch2m.com

ACTIVITIES GROUP

Director	Joel Christell	(630) 773-3900	jchristell@civiltechinc.com
Committees:			
House &	Steve Pautsch	(630) 773-3900	spautsch@civiltechinc.com
Special Events	Brian DeSalle	(630) 773-3900	bdesalle@civiltechinc.com
Program	Gregory Gedemer	(847) 518-9990	Ggedemer@kloainc.com

TECHNICAL GROUP

Director	Dan Nowak	(630) 407-6900	Daniel.Nowak@dupageco.org
Committees:			
Seminars	Chris DeRosia	(312) 853-0820 ext 1303	cld@metrotransportation.com
Transportation Planning	OPEN		
ITS	Scott Lee	(847) 925-0120	slee@nateng.com
Roundabouts	OPEN		

STUDENT AFFAIRS GROUP

Director	Kevin O'Neill	(312) 697-7231	kevin_oneill@urscorp.com
Committees:			
Scholarship	Sara Disney	(630) 213-1000	sjd@metrotransportation.com
Internship	OPEN		
Student Activities	OPEN		

PUBLIC AFFAIRS GROUP

Director	Chad Hammerl	(312) 424-5425	Chad.Hammerl@jacobs.com
Committees:			
Public Relations	Melanie Williams	(847) 823-0500	mwilliams@cbbel.com
Legislative Affairs	Dan Loftus	(312) 446-3447	djl@djloftus.com
Conference Coordination	C. Kropidlowski	(312) 744-4866	ckropidlow@aol.com
Past President's	Peter Lemmon	(312) 853-0820	pcl@metrotransportation.com

OPERATIONS GROUP

Director	Tom Hein	(773)314-1200 ext 2864	tmhein@ace-plc.com
Committees:			
Records & Mailing	Mike Phan	(773) 314-1200 ext 2687	mtphan@ace-plc.com
Ambassador	Mike Phan	(773) 314-1200 ext 2687	mtphan@ace-plc.com
Advertising	Bill Eidson	(847) 823-0500	weidson@cbbel.com
Website	YoungJae Ju	(312) 930-9119	yju@hntb.com
ITEMS	Mark Rinnan	(312) 424-5419	Mark.Rinnan@jacobs.com

THE EDITOR'S DESK

Section members and non-members alike are invited to submit articles relevant to the transportation profession, comments, or letters to the editor to Mark Rinnan, c/o Jacobs, One North Franklin, Suite 500, Chicago, IL 60606 or by e-mail to mark.rinnan@jacobs.com