

# items

NEWSLETTER OF THE ILLINOIS SECTION  
INSTITUTE OF TRANSPORTATION ENGINEERS



March 2007

VOLUME 46, ISSUE 1  
SPRING ISSUE



## INSIDE THIS ISSUE:

<b>SECTION AND DISTRICT NEWS</b>	<b>2-9</b>
<b>NATIONAL NEWS</b>	<b>10</b>
<b>PROFESSIONAL DEVELOPMENT</b>	<b>11&amp; 12</b>
<b>CONFERENCES &amp; CALL FOR PAPERS</b>	<b>13</b>
<b>SECTION CALENDAR</b>	<b>14</b>
<b>'06-'07 PLANNER</b>	<b>15</b>
<b>BUSINESS ADS &amp; INDUSTRY NEWS</b>	<b>14-17</b>
<b>LOGO APPAREL</b>	<b>18&amp; 19</b>

## PRESIDENT'S MESSAGE



Spring is just around the corner and we've begun another year of ITE activities. After being actively involved and serving a number of roles with the Illinois Section over the last eight years, I'm looking forward to serving as President for 2007. I feel that we have a great and enthusiastic group of people donating their time and effort as Board members, directors, and active committee participants. **Amarpal Matharu** (Vice President) and **Matt Letourneau** (Secretary) are moving up within the Board and **Tim Sjogren** is stepping up from Director of Student Affairs to serve as Treasurer. Continuing in 2007, our returning directors include **Govind Vadakpat** (Public Affairs) and **Kim Kolody** (Technical Group). Joining as newly elected Directors are **Joel Christell** (Activities Group), **Tom Hein** (Operations Group), and **Kevin O'Neill** (Student Affairs Group). In addition, there are a number of other individuals serving on committees to serve the Illinois Section from helping to organize and facilitate the monthly luncheons and the Annual Banquet, arranging technical seminars, maintaining the Section website, publishing our quarterly newsletters, and organizing the student scholarship program,

among others. This assistance and involvement is necessary to effectively serve the membership of the Illinois Section. If you have any interest and would like to find out how you can get more involved, please do not hesitate to contact any Board member or Director listed on the back of this newsletter.

The Annual Banquet this past January was another success. As in recent years, the event was held at The Wellington in Arlington Heights. We were fortunate to be joined by ITE International President **Earl Newman** and Midwestern District International Director **Steve Manhart**. Both gentlemen addressed the attendees with news from the International and District levels. I would like to thank both Mr. Newman and Mr. Manhart for taking the time to join us on a cold Friday night in January for our Annual Banquet. In addition to installing our new officers for 2007, we also distributed two student scholarship awards each in the amount of \$2,000 and a student paper award in the amount of \$1,000. The recipients of the two scholarship awards were **Kristy Brod** from Bradley University and **Liang Long** from University of Illinois at Chicago. Ms. Long was also chosen as the recipient of the Student Paper Award. Finally, our efforts to raise funds for the Illinois Section Scholarship Fund were very successful. At the Annual Banquet, the donations of several groups, a raffle, and the live/silent auction raised \$4,500 to help fund future scholarship awards. Thank you to everyone who participated for your support of the Section's scholarship efforts.

Before I finish, I'd like to extend my appreciation to our 2006 Illinois Section President, **Dennis**

(Continued on page 2)

## MARCH LUNCHEON

Join us at **Maggiano's**,

516 North Clark, Chicago, IL

**Date:** March 29, 2007

**Time:** Reception - 11:30 A.M.  
Luncheon - 12:00 P.M.

**Cost:** \$30 members  
\$12 Students

**Speaker:** To be announced

**Topic:** RTA/CTA/Metra/Pace Strategic Regional Transportation Plan titled Moving Beyond Congestion (see page 4 of this issue)



## PRESIDENT'S MESSAGE CONTINUED

(Continued from page 1)

**Dal Santo.** Thank you Dennis for your dedication and continued hard work in serving the Illinois Section. Speaking of Dennis, he and **Mark Rinnan** have volunteered to Co-Chair the planning committee for the 2008 ITE Midwestern District Conference in Chicago. As hosts, the Illinois Section is responsible for planning the conference program, schedule, technical tours, and much more. I know Mr. Dal Santo

and Mr. Rinnan are starting to get the planning committee activities underway shortly, so if you are interested in helping plan the 2008 ITE Midwestern District Conference, please contact Mr. Dal Santo at [dennis.dalsanto@parsons.com](mailto:dennis.dalsanto@parsons.com) or Mr. Rinnan at [mrinnan@ekmail.com](mailto:mrinnan@ekmail.com).

Peter Lemmon, P.E., PTOE  
President, Illinois Section ITE

## ANNUAL AWARDS BANQUET WRAP-UP

The Section is to be congratulated on another very successful 2007 Annual Awards Banquet. Notable mentions for corporate support are **Brown Traffic Products, CH2M Hill, Civiltech Engineering, Edwards and Kelcey, Lin Engineering, Metro Transportation Group, Regina Webster Associates** (for really cool jewelry), and **V3 Companies**. Individual donations were made by **Joel Christell, Rolf Kilian, John Mick, and Mark Rinnan**. Combining the donations, auction, and raffle, the night's scholarship total was over \$4,500. Thanks to bidders and donors alike!

**Kristy Brod** was awarded the first of two \$2,000 scholarships. She is currently a graduate student at Bradley University, where she also completed her undergraduate degree in Civil Engineering. She is a member of engineering honorary societies Tau Beta Pi and Chi Epsilon and also volunteers in her community through Big Brothers and Big Sisters and at Children's Safety Village. Kristy currently works as an aviation engineer at Crawford, Murphy, and Tilly, Inc., in Springfield, Illinois

The second \$2,000 scholarship and the \$1,000 paper award was presented to **Liang Long**. Liang is a University of Illinois at Chicago graduate student with a perfect 4.0 grade point average. She was a part of the steering committee for the 2006 Transport Chicago Conference and works as a moderator at the Urban Transportation Center Ph.D. Forum. Liang is also a skilled technical writer, earning her honors for this year's ITE Student Paper Award for her publication "Transferability of Household Data Across Neighborhood Types and Geographic Areas Using National Household Travel Survey".

The evening was not all business and recognition. **John LaPlante** and **Tom Kaeser** of TY Lin International led attendees through a highly amusing "Name That Sign" exercise. The sign panels provide unique messages for National Park District uses. The exercise got the right side of our brains going with suggestions such as 'No.2 and No.1 bathroom' for the squatting/standing figures shown in the right sign panel in the photo to the right.

## 2008 ITE VICE PRESIDENT CANDIDATE PREVIEW

Candidates for the position of ITE International Vice President include **Rod Kelly** (a candidate in the 2007 election) and **Ken Voigt**, previously the International Director for the Midwestern District (4). ITE is also seeking a candidate for Transportation Planning Senior Director, a full

time position in the Washington DC office. Additional information about the Vice Presidential candidates and the senior director position are posted on the ITE website at <http://www.ite.org/>



Liang Long is presented the Section Scholarship award by ITE International President Earl Newman and Scholarship Chair Sara Disney



John LaPlante and Tom Kaeser lead the Section through an entertaining sign naming exercise



Attendees guess at the meaning of National Park District signs



Silent auction items included jewelry, wine/champagne baskets, gourmet food in an "old school cooler", and a chocolate basket, among others



## MEET THE 2007 ILLINOIS SECTION OFFICERS

### PRESIDENT

#### PETER LEMMON, P.E.

Peter Lemmon is a Senior Transportation Engineer with Metro Transportation Group in Chicago, Illinois. He has experience in the areas of traffic impact, corridor and area-wide transportation planning, traffic simulation analyses, and sports facilities planning. Peter received a Bachelor of Science in Civil Engineering from Purdue University in 1998.

Since graduation, Peter has been an international and associate member of ITE. As an active member, he has served as editor of ITEMS from 1999 through 2002, Director of the Operations Group in 2003, Treasurer in 2004, and Secretary in 2005.

### VICE PRESIDENT

#### AMARPAL MATHARU, P.E.

Mr. Matharu works as a Transportation Engineer with CH2M HILL. His work experience includes traffic operations and planning, highway design, and project proposals and management. Amarpal holds an M.B.A. from City University of New York, M.S. in Civil Engineering from the University of North Carolina, and a B.S. in Civil Engineering from India.

Amarpal has been a member of ITE since 1991. As an active member, he has served as Treasurer and Director of the Student Affairs Group and as a committee member for the District IV Annual Meeting's Technical Program Committee. Amarpal is also a Board Member and Treasurer of the Asian-Indian Punjabi Cultural Society that is active in the Midwest.

## MEET ME IN ST. LOUIE!

The ITE Midwestern District 4 Conference this year will be held June 13 to 15 at the Hyatt Regency St. Louis, St. Louis, Missouri. Those planning to attend can now feel free to make your hotel reservations. Rates are single/double occupancy: \$129.00, triple occupancy:

### SECRETARY

#### MATTHEW LETOURNEAU, P.E., PTOE

Mr. Letourneau is a Principal Transportation Engineer with Edwards and Kelcey in Chicago and a registered professional engineer in the state of Illinois. Since joining Edwards and Kelcey, he has been involved in the Phase I design of South Lake Shore Drive, various traffic signal design projects, and several projects involving the design and implementation of intelligent transportation systems (ITS). Most recently, Matt has helped to develop the draft Illinois Statewide ITS Architecture and Strategic Plan.

Matt has worked in the Activities Group, arranging a number of luncheon topics over the years. Since June of 2003 Matt has served as Technical Group Director for the Illinois Section, helping to arrange a series of technical seminars for the Section membership, including the "Rural ITS Toolbox" and the "Traffic Signal Design and Operations" course.

### TREASURER

#### TIM SJOGREN, P.E., PTOE

Mr. Sjogren is a Senior Transportation Engineer with Metro Transportation Group in Hoffman Estates, Illinois. His work experience has taken him from Champaign (he received his degree in Civil Engineering from the U of I—Urbana/Champaign) to Boston, and now to Chicago. He has served as a project manager for over 100 transportation related projects with both private and public sector clients. Since graduating in 2000, Tim has been an international and associate member of ITE. As an active member, he has served as chairperson of the Illinois ITE scholarship committee and Director of Student

\$149.00, and quadruple occupancy: \$169.00 (BRING THE KIDS!)

When you make your reservations, be sure to tell them that you are part of the conference. Check the conference web site at <http://www.meetmeinstl07.movite.org/index.htm>



Section President Peter Lemmon



Section Vice President  
Amarpal Matharu



Section Secretary Matt Letourneau



Section Treasurer Tim Sjogren



## MOVING BEYOND CONGESTION—STRATEGIC REGIONAL TRANSPORTATION PLAN

The following Executive Summary was forwarded by **Clayton Weaver** of Weaver Consulting and is published as part of the Regional Transportation Strategic Plan, a collaborative effort by the RTA, CTA, Metra, and Pace. For more information on this vital subject, see the sidebar on this page.

### INVESTING IN TRANSIT STRENGTHENS OUR ECONOMY AND OUR QUALITY OF LIFE

Public transit is essential for our region's economy, our ability to compete in a global economy, our quality of life, our environment and to address congestion and maintain mobility throughout the region. Public transportation provides an important link between employers and their staff. It reduces pollution and reduces the use of oil. It cuts travel times and reduces traffic congestion. For people who do not drive or own a car, transit is a lifeline, enabling people to get around safely, conveniently and affordably. Are we prepared to make the needed investments to create jobs, reduce traffic, cut pollution and significantly improve our quality of life?

That's the question facing Illinois today as the CTA, Metra and Pace work to meet rising costs on an aging system that serves two million riders every day. The Regional Transportation Authority helps these three public transit agencies plan together, balance their budgets, raise revenues and coordinate activities. This comprehensive strategic plan contains a five-year proposal that clearly describes the investment in transit that we must make in order to remain a strong and growing region.

### THE CHALLENGE: AN UNDER-FUNDED, AGING SYSTEM IN A CHANGING MARKET

Our transit system includes over 3800 buses and vans and 2300 train cars serving Chicago and hundreds of suburbs spread across six counties. Some parts of the system are newer

and they work well. Other parts of the system are more than a century old and are in need of a major overhaul. For safety reasons, we have slow zones on several city and suburban train lines throughout the system causing delays for everyday commuters. The busier train lines are so crowded during rush hour that people cannot board. Many of our buses, trains and passenger vans are well-past their useful life, leading to frequent breakdowns. At the same time, we have added needed new train and bus service to growing suburban communities and new transit options for important segments of our population, such as people with disabilities and senior citizens. Looking to the future, we want to do a better job of enabling people to transfer seamlessly between Metra, Pace and the CTA. Some of this work has already begun but much more needs to be done.

Now consider these facts:

- **Despite adding service and the rising cost for fuel, security in the post-9/11 era, health care and pensions, operating costs have been held constant since 1986 (when controlling for inflation), while revenues have declined.**
- **The State of Illinois has historically supported public transit with hundreds of millions each year for new capital projects, but has not provided capital funding since 2004 causing us to defer maintenance resulting in slowdowns and breakdowns.**
- **The problem is made worse because we have been forced to divert limited capital dollars to help pay for operations. Our current budget is \$226 million short for this year. We need approximately \$400 million more in operating funds each year to keep our trains and buses running on time, and address the growing demand for transit.**
- **The region must invest \$10 billion in the next five years to get the entire system into good working order, replace older trains and buses, add service where it is critically needed, and plan and design a transit system worthy of our reputation as one of the great metropolitan**

(Continued on page 5)



### MORE INFORMATION AND HOW TO GET INVOLVED

The entire Regional Transportation Strategic Plan report titled [Moving Beyond Congestion—2007 the Year of Decision](#) along with information on how to become involved can be found on the web at <http://www.movingbeyondcongestion.org/>. As transportation engineers and planner, this vital effort must succeed. Contact your representatives in the Illinois General Assembly and let them know your position on this important effort. Don't know who to contact? Find out on the web at <http://www.elections.il.gov/DistrictLocator/>





## MOVING BEYOND CONGESTION (CONT.)

(Continued from page 4)

regions of the world.

- Over the next 30 years, \$57 billion must be invested throughout the region in order to create the public transit system Northeast Illinois really wants and needs to meet population projections, development patterns, travel demands, and air quality goals.

### OUR FIVE YEAR INVESTMENT LAYS THE FOUNDATION FOR THE FUTURE

Numbers like these are overwhelming until you see what is behind them, so here's what the five-year plan means for you. We divide our capital investments into three categories:

- **Maintain** – meaning repairs and upgrades that keep our existing systems in good working order so that there are fewer delays and other problems.
- **Enhance** – meaning more and better and faster service without building any major new city or suburban train lines.
- **Expand** – meaning new train and bus routes requiring major investments that will cost billions of dollars and take years to complete.

**Maintain – \$7.3 billion:** As any homeowner knows, you need to fix up your house before you build out and that's especially true of public transit. Here are the highlights:

- **Rolling Stock:** For safety reasons and to modernize the fleet, funds are needed to replace aging trains, buses and vans that are beyond their useful life.
- **Track and Structure:** Train tracks, railroad ties, bridges and viaducts need repairs. Metra has 1200 miles of track and 800 bridges; CTA has 290 miles of track – 50 above ground and 24 below – as well as 115 bridges or viaducts. To

speed travel times and avoid slow zones, we need to invest in order to fix rails and ties, bridges and structures and repair signals, electrical systems and communications.

- **Passenger and Support Facilities and Equipment:** Significant funds are needed to improve train stations and parking lots serving riders as well as repair facilities for trains and buses both in the city and the suburbs.

**Enhance - \$1.1 billion:** As the travel market changes, so do the demands on the system, warranting over \$1 billion in added service throughout the system.

- **Off-Peak and Weekend Service:** While the weekday commuter is the biggest segment of the market, more and more people are using transit outside the rush hours and all three agencies are under pressure to serve this growing demand.
- **Faster service and more seats:** At the same time, both commuters and non-commuters want faster service, less crowding and more seats and that requires more drivers and more buses and trains.
- **Vans and van pools are an increasingly popular public transit option for people with disabilities, seniors, and people living in low density communities.** Demand rose 22% since 1980 and will climb higher as baby boomers retire.
- **More Reverse Commuting Options:** One look at outbound highways in the morning shows growth in reverse commuting. Service options include shuttle buses from suburban train hubs to job centers and express bus routes.
- **Suburb to Suburb:** With six of the top 10 cities in the state located in the collar counties, inter-suburban travel is on the rise. Pace is looking at new services to meet this growing market.

(Continued on page 6)



a joint strategic  
planning project by





## MOVING BEYOND CONGESTION (CONT.)

(Continued from page 5)

- **Passenger Efficiencies: Providing better customer information, easier transfers between trains and buses, coordinated schedules, and better pedestrian connections are among a broad range of improvements.**

**Expand - \$2 billion:** 11 major suburban and city projects are currently in the planning or design phase, 15 more in the proposal phase, and another two dozen projects suggested by various transit advocates and community leaders. Together these projects represent a solid return on our investments because local funds are often matched with federal dollars, making our money go further. These projects offer a bold and exciting vision for public transit in the coming decades.

### FUNDING: THE WISDOM AND THE WILL TO INVEST

**Capital:** The federal government makes billions of dollars available each year for public transit projects and challenges state and local governments to provide matching funds. The State has provided no capital money since 2004 forcing local governments to provide the entire match. Our hope is that the State will pass a capital plan this year that gets us the \$10 billion we need over the next five years.

**Operating:** The RTA's goal is to generate \$400 million more per year without overburdening passengers. Revenue proposals, including a

review of revenues currently collected in the RTA region, must be considered. We appeal to state lawmakers and the Governor to craft a comprehensive proposal and have offered a summary of revenue options used across the country and around the world to generate funds for public transportation.

### CONCLUSION: OUR FUTURE IS AT STAKE

We welcome an open, honest and vigorous debate on the subject of transit investments and funding. We encourage everyone who cares about our quality of life, our economy and our long-term health to participate. The future of our region is at stake and this is no time for half-measures. We all live, work and play in a highly mobile society and if we want it to grow and meet our future needs, now is the time to invest in public transit.

From the central city to the farthest suburbs the Chicago region is poised for growth and greatness, bidding for major international events like the Olympics and securing its global reputation as one of the most progressive, vibrant and culturally integrated metropolises in the world. At the heart of this vision is a modern, efficient public transit system that will leverage our economic assets and to help realize our individual dreams and collective hopes in the years and the decades ahead. Today's sound investment yields tomorrow's infinite promise.

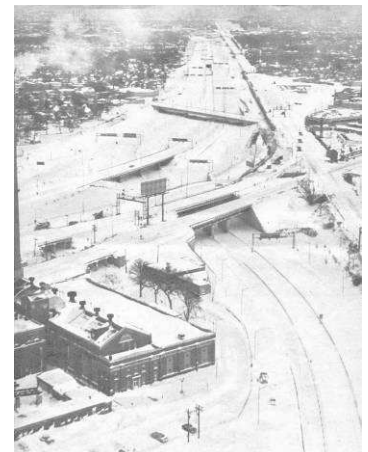


Buried cars at Lake Shore Drive and Foster

### THE BLIZZARD OF '67

By Jim Allsop, Warning Coordination Meteorologist.

Forty years ago, on January 26 and 27, 1967, Chicago endured its worst snowstorm ever. The snow started at 5:02 AM on the 26th, and by 10:10 AM of the 27th a record 23 inches of snow crippled the city. The previous record snow for the city was 19 inches on March 25th and 26th, 1930. During the storm winds gusted to 53 mph at Midway Airport. The high winds caused considerable blowing and drifting. Drifts 4 to 6 feet high were widespread throughout the area.



No traffic moving at the Kennedy-Edens junction.

## ITE MIDWESTERN DISTRICT BOARD

Members of the ITE Midwestern District (4) Board include **District President Kyle Anderson** of the MOVITE section and employed by Felsburg Holt & Ullevig, **Vice President Jeff Young**, of the Illinois Section employed at the McHenry County (Illinois) Division of Transportation, **Secretary/Treasurer John Davis** of the Wisconsin Section. **Steve Manhart** of Edwards and Kelcey serves as your recently elected International Director. **Tom Campbell** continues to serve as

Administrator (Ex-Officio). For more information, visit the on the Midwestern District web-site at [www.midwesternite.org/](http://www.midwesternite.org/). You may note some of the information on the web site is dated. The district is in need of a web master, so if you need those PDH or just have an interest in volunteering your services, contact Tom Campbell via e-mail at [te.campbell@comcast.net](mailto:te.campbell@comcast.net) or by phone at (651) 484-4638



## STUDENT INTERN PROGRAM

By **Kevin O'Neill** of URS Corporation. The student internship program returns for the summer of 2007. The program aims to provide information to college undergraduate and graduate students in transportation planning and engineering disciplines about internship opportunities at participating firms and organizations. By offering a part- or full-time position through the program, employers are exposed to a pool of enthusiastic students not only from Illinois, but from around the Midwest.

An internship will benefit both the student and the employer. For the student, it provides on-the-job training, an opportunity to translate theoretical learning into practical experience, and an additional source of income. However, you as the employer will experience significant benefits as well. First, the program provides a convenient way to publicize your internship among a large student population. Second, as a recruiting tool, an internship puts your name before a large pool of potential permanent employees. The intern will publicize your firm or

agency as a desirable place to work. Last but not least, an intern can help stretch project budgets and assist in numerous project activities.

If you are considering hiring an intern for part- or full-time work, we invite you to participate in our program. Please contact the IL ITE Student Internship Committee Chairperson, Mayank Goyal. If you have not considered hiring a student intern, give it some thought. You will be doing yourself a service while strengthening the profession and helping a deserving student. Please contact the Section ASAP.

**Mayank Goyal**  
**Edwards and Kelcey, Inc.**  
**One N Franklin St, Ste 500**  
**Chicago, IL 60606**  
**phone: (312) 251-3000**  
**email: mgoyal@ekmail.com**

### KEEP YOUR MEMBERSHIP INFORMATION CURRENT...

...by using the Change of Personal Information Form on the Illinois Section website at <http://www.ilite.org/public/membership/ChgInfo.pdf>

## MATHCOUNTS COMPETITION

The following article was submitted by **Stacey Meekins** of Edwards and Kelcey.

In an inaugural program, engineers from the Chicago area volunteered as assistant coaches to students participating in this year's Mathcounts competition. The effort to get engineers into classrooms was spearheaded by **Wilbur Milhouse, III**, co-chair of the Chicago Mathcounts competition. Milhouse also serves as the Chicago Chapter President of the Illinois Society of Professional Engineers and was able to convince regional firms of the value of donating their employees' time to tutor future engineers. Volunteers joined coaches in Chicago schools and left their offices on a weekly basis to practice math with middle school students on a Mathcounts team. The first year of part-

nerships proved to be a success and the program is anticipated to expand in the future.

The teams geared up through the fall for the annual regional competition. Chicago's was held at the University of Illinois at Chicago on February 3, 2007. Two awards were presented at a dinner at the conclusion of Engineers Week on Friday, February 23 at the Washington Award Banquet. The Overall Team award will go to **University of Chicago Laboratory Schools** and the Overall Individual award will go to **Ben Mil-denhall** from Percy Julian Junior High. Nine schools and twelve individuals will continue to compete at the state level.

More information about the Mathcounts competition is available at [www.mathcounts.org](http://www.mathcounts.org).





## CMAP TRAVEL TRACKER SURVEY

### CMAP CONDUCTS LARGEST HIGH-WAY AND TRANSIT SURVEY OF NORTHEASTERN ILLINOIS RESIDENTS IN OVER A DECADE

**CHICAGO, January 22, 2007** – The Chicago Metropolitan Agency for Planning (CMAP) has launched a year-long survey of the region's residents to learn about travel habits and transportation needs.

The new CMAP "Travel Tracker" survey is randomly enlisting over 13,000 households in the greater Chicago area to participate in a telephone or Web-based interview. The results will help planners understand why and how people make their daily travel plans.

Throughout 2007, CMAP will contact randomly selected residents by mail and telephone. An adult in the household will be asked to volunteer themselves and other household members to record their travel habits for a one- or two-day period. Household demographic information will also be gathered that allows the survey to be compared to Census results for the region's entire population.

"The metropolitan region's last large-scale travel survey was conducted in the early 1990's," said Kermit Wies, CMAP deputy executive director for research and analysis, who is leading the effort. "So our Travel Tracker results are eagerly anticipated by many of the region's planning and transportation agencies, and by university researchers seeking solutions to pressing transportation problems."

The Travel Tracker survey complements several recent and upcoming surveys being conducted by CTA, Metra and Pace, with the results being combined to better analyze transit usage region-wide.

Some households will also be recruited to carry a Global Positioning Satellite (GPS) device, Wies said. That will help CMAP planners understand how travelers react to different transportation system conditions such as congestion or inclement weather. Other households will be interviewed regarding their views on potential new transportation offerings or community design attributes.

The Travel Tracker Survey is voluntary and the results are completely confidential. The final results will be released only in summary form and will not contain any information that can be used to identify participating households. CMAP uses survey results to predict how future travelers will use the transportation system under different scenarios and how they will react to specific transportation improvements.

"The Travel Tracker survey results are critical to evaluating the costs and benefits of planned transportation improvements," said Randy Blankenhorn, CMAP Executive Director. "We will coordinate the results of this regional survey with studies of individual transportation projects to demonstrate how major new infrastructure investments would complement the overall transportation system's existing assets."

CMAP was created recently to consolidate regional planning functions of the Chicago Area Transportation Study (CATS) and the Northeastern Illinois Planning Commission (NIPC). The Travel Tracker survey is funded through CATS' annual work program developed cooperatively with the region's transportation agencies. The survey is being conducted by NuStats LLC, of Austin, Texas, an internationally recognized survey research firm specializing in travel and transportation studies

### REFER A FRIEND

The Illinois Section will send a complementary issue of ITEMS to your friend or business acquaintance who may be interested in joining ITE. E-mail the contact information to your ITEMS editor at: [mrinnan@ekmail.com](mailto:mrinnan@ekmail.com) or fax the information to 312.251.3015. The contact will be provided membership information and acknowledgement of your referral.



233 South Wacker Drive  
Suite 800, Sears Tower  
Chicago, IL 60606

312-454-0400 (voice)  
312-454-0411 (fax)  
[www.chicagoareaplanning.org](http://www.chicagoareaplanning.org)





## SUPPORTING CREATE

The Chicago Region Environmental and Transportation Efficiency (CREATE) Program is a first-of-its-kind partnership between the State of Illinois, the City of Chicago, Metra, and the nation's freight railroads. CREATE is aimed at improving the overall efficiency of rail service in the Chicago Region, which is critical for further industrial development. In total, the CREATE Program would invest \$300 million in critically-needed improvements to increase the efficiency of the region's rail infrastructure. More information is available on the CREATE web site (<http://www.createprogram.org>).

Sending letters of support for the CREATE Plan can help. For convenience, a boilerplate letter is provided herein to use as a model. You may use the text in the attachment to place on your letterhead and mail it to Governor Blagojevich.

### SAMPLE LETTER

The Honorable Rod Blagojevich  
Governor, State of Illinois  
207 State House  
Springfield, IL 62706

Dear Governor Blagojevich,

Thank you for proposing \$100 million for the Chicago Environmental and Transportation Efficiency (CREATE) Program in the 2005-06 Capital Bill. Given that the capital bill is still outstanding, I would like to offer my support for a reintroduction of CREATE funding at a minimum of \$100 million for the 2006-07 budget year. This will leverage existing resources

## FUTURE CITIES

By **Govind Vadakpat** of Parsons Transportation Group. As part of the Chicago Regional Future Cities competition, the ITE Illinois Section sponsored a special award program. The theme for this year's competition was the most innovative future city that demonstrates a safe and efficient surface transportation system, considering growth and preserving the environment. A total of 21 teams participated in this year's

including \$100 million from the federal government secured through the federal reauthorization bill, SAFETEA-LU, \$100 million from the freight rail industry and \$30 million from the City of Chicago.

CREATE is a project of national and regional significance which will materially increase velocity, safety, and performance of the rail system throughout the region and the nation. The multiplier effects of these trade flows and services are associated with approximately 5 million jobs, \$782 billion in economic output, and \$217 billion in wages nationwide. The traffic handled by the CREATE corridors accounts for about \$10 billion (29 percent) of the revenues earned by U.S. Class I freight railroads. The enormous magnitude of the Chicago region's rail activity means that even very small percentage improvements in efficiency can produce very large public benefits. Additionally, it will improve rail passenger service, reduce motorist delay, increase safety, and provide environmental and energy benefits for the public. CREATE is a model for the nation for public-private partnerships.

Thank you for your ongoing support of CREATE. It is important to our current business, and our future growth, that any State Capital program contain a minimum of \$100 million for CREATE to supplement the federal, railroad and City share.

Sincerely,

event. Ms. **Brittany Blawn** and Ms. **Elizabeth Norton** of Parsons were the volunteer judges representing the Illinois Section. The winner of this year's Excellence in Transportation Safety and Operations award was **Aqualliptica**, from **Stone Scholastic Academy**. Their design included boats, pedestrian facilities, and cars.



"Chicago is in danger of becoming a bottleneck in the nation's transportation system, and that would have serious consequences – not just for this city, but for the entire nation."

Chicago Mayor Richard M. Daley



Students from Stone Scholastic Academy explain their model future city to Brittany Blawn (far left in black shirt)



## PETERS SAYS “CORRIDORS” WILL HELP “WAR ON CONGESTION”

On February 1, 2007, Transportation Secretary Mary Peters announced the semi-finalists in the agency's “Corridors of the Future” program, saying the Department is committed to reducing congestion on the nation's busiest highways.

Peters said that forward-leaning plans to reduce traffic tie-ups on several of the nation's busiest highways are one step closer to becoming a reality as she announced the list of interstate corridors that qualified as semi-finalists under the Corridors of the Future program -- a program recently announced by USDOT to help fight congestion on the nation's roadways.

The Department is using this national congestion relief effort “to fight back against the traffic that is choking our major roads.” Peters said the Corridors of the Future effort is a progressive approach that includes transportation planning across state lines in ways that reduce congestion and preserve the efficient flow of goods and commerce across America. She went on to caution that “if we don't act today, our economy will be facing a standstill in the future.”

The Department is advancing 14 of 38 proposals located on eight major transportation corridors including: I-95 between Florida and Maine; I-15 in southern California and Nevada; I-80/94 and I-90 linking Illinois, Indiana, and Michigan; I-5 in California, Washington and Oregon; I-70 from Missouri to Ohio; I-69 from Texas to Michigan; I-80 in Nevada and California; and I-10 from California to Florida.

The proposals currently include various combinations of expanded highway capacity, truck-only lanes, increased freight and passenger rail development, and extensive use of innovative technologies to keep traffic moving and improve overall safety. Peters said the applicants “exhibited creativity and innovation in their initial proposals to reduce congestion.” She

indicated that the Department looks forward to the next phase of the program in which these ideas will be further developed and refined.

The 14 projects were selected based on the potential of each to reduce congestion on the eight corridors of national and regional significance using innovative financing and project delivery techniques. She noted that the Department will select up to five Corridors of the Future in the summer of 2007.

Peters said the Department will aggressively support the development of the Corridors of the Future by accelerating permitting schedules, identifying new financing options, and promoting innovative project delivery methods to “move these projects from the drawing board to completion faster than ever before.”

The Corridors of the Future program is one element of DOT's six-point National Strategy to Reduce Congestion on America's Transportation Network launched in May 2006. The overall national congestion initiative is focused on reducing traffic on highways, relieving freight bottlenecks, and reducing flight delays.

For additional information visit the US DOT website at <http://www.dot.gov/> and search for Corridors of the Future using the internal search engine in the upper right corner.



Mary Peters, Secretary, US Department of Transportation





## TRANSPORTATION CERTIFICATION UPDATE

The following is a reprint of an open letter from Mr. **Steve Manhart**, International Director, Midwestern District, ITE.

Just a few years ago, transportation professionals questioned the worth of any additional certification beyond the professional engineer license or AICP certification. Now, the Professional Traffic Operations Engineer (PTOE) certification has become an accepted and respected recognition of qualifications.

To date, total applications for the PTOE certification since the beginning of the program have surpassed 2,125 and there are more than 1,700 PTOEs worldwide. In the Midwestern District alone, we have 275 PTOEs.

Certification opportunities are on the rise. The PTOE, Traffic Operations Practitioner Specialist (TOPS) and Traffic Signal Operations Specialists (TSOS) certification exams are set to be offered on March 24, 2007. On that date, the Transportation Professional Certification Board (TPCB) will also be offering a new certification exam—the Professional Transportation Planner (PTP) certification exam.

Certification requirements, fees and exam schedule are posted on the updated TPCB website, [www.tpcb.org](http://www.tpcb.org). You will also find the listing of the seven March 24 exam locations, which includes one in the Midwestern District (Chicago), one close by (Dallas), and one at the ITE Technical Conference in San Diego. Please

note that the application deadline has been extended to March 9, 2007, for these exams.

Preparation assistance for these exams is available on the TPCB website. There are online practice exams for all four certification programs and they are hosted on ITE's [learning.com](http://learning.com) website. The cost of the practice exams has been lowered to \$10 per exam. Copies of the TSOS and TOPS Refresher course reference and the PowerPoint slide set with instructor notes are available for purchase. Soon, complete recordings of the PTOE/TOPS/TSOS web refresher courses will be offered for self-study.

I encourage you to talk up these certification programs. Consider setting the example for your section. Encourage peers and subordinates to apply to take one or more of the exams. Remind everyone there is still time to sign up for the March 24 exams at any of the seven locations. The TPCB has pledged to expedite applications as they come in.

Together, we can post a record number of people sitting on one day taking the TPCB certification exams. Help us meet the goal to have more than 50 sit for the new Professional Transportation Planner exam.

Thanks!

Steve Manhart, P.E., PTOE  
Midwestern District Director



Steve Manhart, PE, PTOE,  
International Director, Midwestern  
District, Institute of Transportation  
Engineers

## PROFESSIONAL DEVELOPMENT SEMINARS

### ITE WEB SEMINARS

Registration for the ITE web seminars listed below closes 3 days prior to course date. Visit <http://www.ite.org/education/webinars.asp> to register. A copy of the presentation and a student supplement are provided two days prior to the web seminar.

### TRAFFIC SIGNAL CHANGE INTERVALS

**Tuesday, March 6, 2007, 1:00 p.m.–2:30 p.m.**  
**CST Credits 1.5 PDH/.15 IACET ITE Member**  
**Price: \$250/Nonmember Price: \$275**

(Continued on page 12)



## PROFESSIONAL DEVELOPMENT SEMINARS (CONT.)

(Continued from page 11)

### LOW COST SAFETY IMPROVEMENT WEB BRIEFING

Wednesday, April 11, 2007, 3:00 p.m.–4:30 p.m. CST Credits 1.5 PDH/.15 IACET \$100 Site Registration Fee.

### SIGNAL TIMING FUNDAMENTALS

Thursday, May 3, 2007, 1:00 p.m.–2:30 p.m. CDT Credits 1.5 PDH/.15 IACET ITE Member Price: \$250/Nonmember Price: \$275

### ADVANCED SIGNAL TIMING

Thursday, May 31, 2007, 1:00 p.m.–2:30 p.m. CDT Credits 1.5 PDH/.15 IACET ITE Member Price: \$250/Nonmember Price: \$275

### ACEC-IL IDOT SEMINARS

Registration forms for all American Consulting Engineers Council of Illinois (ACEC-IL) seminars are available from ACEC-IL by calling 217/529-7430 or e-mailing [acec-il@acec-il.org](mailto:acec-il@acec-il.org). A listing of planned seminars follows:

### PLAN FORMAT AND COMPOSITION

Wednesday & Thursday, April-11 & 12, 2007~ IDOT District 2 Offices, Dixon, IL. Registration Fee: \$245, Registration Deadline March 9th.

Wednesday & Thursday, June-20 & 21, 2007~ IDOT District 1 Offices, Schaumburg, IL. Registration Fee: \$245, Registration Deadline April 18th.

This course will focus on plan format and composition, which will include the development of nineteen types of plan sheets including Summary of Quantities, Schedule of Quantities, Suggested Stages of Construction and Traffic Control, and Erosion Control Plan, among others.

### EARTHWORK & QUANTITY CALCULATIONS SEMINAR

Thursday, May-3, 2007~ IDOT District 2 Offices, Dixon, IL. Registration Fee: \$145, Registration Deadline April 3rd.

Wednesday, June-20, 2007~ IDOT District 1 Offices, Schaumburg, IL. Registration Fee: \$145, Registration Deadline May 18th.

Topics will include discussions on performing earthwork, roadway and drainage computations. This course will not discuss design methods but will focus on plan quantity calculations on predetermined pay items.

### CULVERT DESIGN SEMINAR

Thursday & Friday, May-3 & 4, 2007~ IDOT Central Offices, Springfield, IL. Registration Fee: \$245, Registration Deadline April 3rd.

This class will introduce the student to the Department's Culvert Design Manual. Topics include the proper use of design charts, plan requirements for pre-cast culverts, and general structural detailing practice. Structure type selection and planning will also be discussed. Culvert hydraulics and sizing are not discussed.

### IDOT CSS APPROACH TRAINING

IDOT has several approach classes scheduled. Class size is limited, and ACEC-Illinois Members may reserve 6 seats. There is no registration fee for the Approach classes, and 12 PDH's will be provided. All locations (listed below) are IDOT district offices and start each day at 8:00 am. Registration deadline is 30 days in advance of classes. You will receive confirmation via e-mail approx. 2 weeks in advance of the class, and will be asked to log on to a specific website to complete a pre-assignment.

- Peoria ~ March 21-22, 2007
- Carbondale ~ March 28-29, 2007
- Springfield ~ April 25-26, 2007
- Schaumburg ~ May 16-17, 2007
- Collinsville ~ May 23-24, 2007

For additional information e-mail [acec-il@acec-il.org](mailto:acec-il@acec-il.org) or phone 217/529-7430.

### VOLUNTEER NOW TO SERVE ON THE 2008 ITE MIDWESTERN DISTRICT 4 CONFERENCE PLANNING COMMITTEE

If you are interest in serving on the planning committee for the 2008 Midwestern District Conference to be held in Chicago, contact Dennis Dal Santo at 312.793-2267 e-mail [Dennis.DalSanto@illinois.gov](mailto:Dennis.DalSanto@illinois.gov) or Mark RInnan at 312.424-5419 e-mail [mrinnan@ekmail.com](mailto:mrinnan@ekmail.com).



## CONFERENCE CALL

A list of conferences is provided for your consideration:

### ITS MIDWEST ANNUAL MEETING

Wednesday and Thursday, March 21 & 22, at the Lincolnshire Marriott Resort, in Lincolnshire, Illinois. For more information visit <http://www.itsmidwest.org/events/2007/> or phone Duana Love at 312-913-3248 or e-mail her at [loved@RTACHICAGO.org](mailto:loved@RTACHICAGO.org).

### ITE TECHNICAL CONFERENCE AND EXHIBIT

Sunday to Wednesday, March 25-28, at the Sheraton San Diego Hotel and Marina in San Diego, California. For more information visit <http://www.ite.org/Conference/> or phone Heather Talbert at 202-289-0222 ext. 138 or e-mail her at [htalbert@ite.org](mailto:htalbert@ite.org).

## CALL FOR PAPERS AND NOMINATIONS

### TRANSPORT CHICAGO 2007

Transport Chicago presents an excellent opportunity to share and hear nationally recognized transportation experts, discover current industry practices, and meet with colleagues in the field. Transport Chicago is seeking papers dealing with all aspects of transportation, including planning, public transit, freight, air, rail, and bicycle and pedestrian transportation. If interested, please submit an abstract (250 word maximum) for anonymous review by the Steering Committee by March 12, 2007. Abstracts must be in the specified format. For more information visit <http://www.transportchicago.org/> or email [jiacobucci@transitchicago.com](mailto:jiacobucci@transitchicago.com).

### 2007 ITE TRANSPORTATION ACHIEVEMENT AWARD

The Transportation Achievement Award is awarded annually for excellence in the advancement of transportation to meet human

### TRB FREEWAY AND TOLLING OPERATIONS IN THE AMERICAS

Sunday to Wednesday, May 20-23, in Houston, Texas. [http://www.trb.org/news/blurb\\_detail.asp?id=6950](http://www.trb.org/news/blurb_detail.asp?id=6950) or contact Richard Cunard via e-mail at [RCunard@nas.edu](mailto:RCunard@nas.edu) for more information.

### TRANSPORT CHICAGO 2007

Friday, June 1 at the Illinois Institute of Technology, Chicago, IL. For program details and registration information, check the conference web site at <http://www.transportchicago.org/>.

### ITS AMERICA ANNUAL MEETING & EXPOSITION

Monday to Wednesday, June 4-6, 2007, at the Palm Springs Convention Center, Palm Springs, California. For additional information visit <http://www.itsa.org/annualmeeting.html>

needs by entities concerned with transportation such as governmental agencies, legislative bodies, consulting firms, industry and other private sector organizations. The award consists of recognition at the ITE Annual Meeting and in ITE Journal and a plaque. Awards will be presented to outstanding transportation achievements in the following categories: All Users, Bicycle, Facilities, Operations, Pedestrians, Safety, and Signal Systems. Should a project or program encompass multiple award categories, the one combined award will be given. To be an eligible recipient for the proposed awards, the candidates can be: a government agency, transportation consulting firm, private business or corporation, combined public/private institution, academic institution or any other appropriate entity. Please submit the nominated project or program on materials electronically formatted (in Adobe Acrobat) by April 2, 2007 to Heather Talbert at [htalbert@ite.org](mailto:htalbert@ite.org) attn: Transportation Achievement Award.



### TRUE BEARS FAN

A man had 50 yard line tickets for the Bear's game. As he sits down, a man comes down and asks if anyone is sitting in the seat next to him. "No," he says, "the seat is empty."

"This is incredible," said the man. "Who in their right mind would have a seat like this for the Bears game, the biggest sporting event in the world, and not use it?"

He says, "Well, actually, the seat belongs to me. I was supposed to come with my wife, but she passed away. This is the first Bears game we haven't been to together since we got married in '57."

"Oh, I'm sorry to hear that. That's terrible. But couldn't you find someone else -- a friend or relative, or even a neighbor to take the seat?"

The man shakes his head. "No, they're all at the funeral."



**SECTION CALENDAR**

**MARCH 2007**

SUN	MON	TUE	WED	THU	FRI	SAT
				1	2	3
4	5	6	7	8	9	10
11	12	13	14	15	16	17
18	19	20	21	22	23	24
25	26	27	28	29	30	31

**APRIL 2007**

SUN	MON	TUE	WED	THU	FRI	SAT
1	2	3	4	5	6	7
8	9	10	11	12	13	14
15	16	17	18	19	20	21
22	23	24	25	26	27	28
29	30					

**MAY 2007**

SUN	MON	TUE	WED	THU	FRI	SAT
		1	2	3	4	5
6	7	8	9	10	11	12
13	14	15	16	17	18	19
20	21	22	23	24	25	26
27	28	29	30	31		

**SCHEDULE OF EVENTS**

- **March 14—Transportation Lobby Day, hosted by Transportation for Illinois Coalition, Springfield, IL. For more information visit <http://www.ilchamber.org/ic/inf/tfic/TFIHome1.asp>**
- **March 25 to 28— ITE Technical Conference and Exhibit, Sheraton San Diego Hotel and Marina, San Diego, CA. Visit the website at <http://www.ite.org/conference/>**
- **March 29 — Illinois Section Luncheon, Maggiano's, Chicago, Illinois**
- **April 5—8th Annual Structural Engineering Conference, sponsored by the University of Illinois at Urbana-Champaign at the Illini Union, Urbana, Illinois. Visit the Web site at <http://www.conferences.uiuc.edu/structural> or call Dorothy Horsch at 217-333-2880**
- **April 19 — Illinois Section Luncheon, Maggiano's, Chicago, Illinois**
- **May 15—ITEMS Deadline**
- **May 17 — Illinois Section Luncheon, Maggiano's, Chicago, Illinois**
- **May 22 & 23—2-day workshop on Modern Roundabout by NE ROUNDABOUTS, Detroit, MI. Email: [round@roundabouts.cc](mailto:round@roundabouts.cc), visit the website: [www.roundabouts.cc](http://www.roundabouts.cc), or call 518-783-2124 (office) or 518-424-5933 (cell).**

**Christopher B. Burke Engineering, Ltd.**

9575 W. Higgins Road, Suite 600  
Rosemont, IL 60018  
Tel (847) 823-0600 Fax (847) 823-0620

Office Locations:

Rosemont, IL  
New Lenox, IL  
St. Charles, IL  
Sycamore, IL  
Peoria, IL

Indianapolis, IN  
Crown Point, IN  
South Bend, IN  
Fort Wayne, IN

- *Water Resources*
- *Stormwater Management*
- *Environmental*
- *Transportation*
- *Structural*
- *Mechanical/Electrical*
- *Surveying*
- *Construction*
- *Design/Build*



**Want to Advertise?**

Place your business card in *ITEMS*.  
Contact:

William Eidson  
847.823.0500  
[weidson@cbbel.com](mailto:weidson@cbbel.com)

**Transportation Engineering**

- ✓ Traffic/Planning Studies
- ✓ Roads, Streets & Highways
- ✓ Bridge Replacements
- ✓ Signals & Lighting
- ✓ Stormwater Management
- ✓ Construction Services
- ✓ Utilities & Railroads



[www.clark-dietz.com](http://www.clark-dietz.com)



**Hampton Lenzini and Renwick, Inc.**

Civil Engineers  
Structural Engineers  
Land Surveyors

380 Shepard Drive  
Elgin, Illinois 60123-7010  
847-697-6700



## ILLINOIS SECTION '07-'08 PLANNER

Please note all dates, locations, and topics are tentative. Check the section calendar in future editions of ITEms or on line at [www.ilite.org](http://www.ilite.org) to verify details.

### 2007

June 13 to 15	District 4 Annual Conference hosted by MOVITE
June 21	Joint Luncheon with ASCE, Suburban Maggiano's
July 12	Joint Luncheon ITE/WTS, location to be determined
July 19	Joint ITE Irish-American Engineers Golf Outing
August 5-8	ITE Annual Meeting and Exhibit , Pittsburgh PA
September 20	Joint Dinner with ISPE at the Holiday Inn, Naperville
October 18	Student Welcome Back Luncheon at UIC
November 15	Monthly Luncheon in Rockford at Cliffbreakers
December 13	Year End Event at Bella Bacino's, Downtown Chicago

### 2008

January 25	Annual Awards Dinner at Wellington, Arlington Heights, IL
February 22	Engineer's Week Washington Banquet
March 20	Monthly Luncheon at Downtown Chicago Maggiano's
March 30 - April 2	ITE Technical Conference and Exhibit , Anaheim CA
April 17	Monthly Luncheon at Downtown Chicago Maggiano's
May 22	Monthly Luncheon at Downtown Chicago Maggiano's
Mid-June or Mid-July	District 4 Annual Conference hosted by the Illinois Section
June 19	Suburban Maggiano's - Joint Meeting, ASCE (Tentative)
July 17	Golf Outing - Joint Outing with the Irish Engineers Group
July 24	Location TBA, Joint Meeting, WTS
August 17-20	ITE Annual Meeting and Exhibit , Anaheim CA
September 18	Holiday Inn, Naperville - Joint Meeting (Dinner), ISPE
October 23	Student Day - IIT
November 20	Cliffbreaker's, Rockford
December 18	Bella Bacino's - Happy Hour - Year End Wrap-up

#### COMPREHENSIVE CONSULTING SERVICES Providing Professional Design Services

- Aviation
- Bridges
- Construction Services
- Environmental Engineering
- Highways
- Freight Rail
- Transit
- Urban Design & Planning

111 North Canal Street  
Suite 1250  
Chicago, IL 60606

Telephone (312) 930-9119  
Facsimile (312) 930-9063  
[www.hntb.com](http://www.hntb.com)

**HNTB**



#### Vantage Video Detection Systems

1515 S. Manchester Avenue  
Anaheim, California 92802  
Offices Nationwide

Phone: (847) 687-9146  
[www.iteris.com](http://www.iteris.com)  
> see roadway sensors

#### LOCHNER ENGINEERS AND PLANNERS

*Providing Engineering Excellence for 60 years.*

#### Headquarters:

20 N. Wacker Drive, Suite 1200  
Chicago, IL 60606

312.372.7346

[www.hwlochner.com](http://www.hwlochner.com)



Traffic Engineering  
Transportation Planning  
Signal Systems/Design

#### METRO TRANSPORTATION GROUP, INC.

3100 W. Higgins Road, Ste. 100  
Hoffman Estates, IL 60195-2093  
Telephone: 630.213.1000  
Facsimile: 630.213.3227

[www.metrotransportation.com](http://www.metrotransportation.com)



#### Traffic Engineering / ITS

#### Transportation Design and Construction

100 S. Wacker Drive, Suite 500  
Chicago, Illinois 60606  
312.939.1000  
[www.urscorp.com](http://www.urscorp.com)




**CORPORATE ADVERTISEMENTS**

Construction Management  
Plan Review/Inspection  
Transportation  
Municipal  
Structural  
Planning

Surveying  
Brownfields  
Environmental  
Parks & Recreation  
Stormwater Management

Chicago • Denver • Phoenix • v3co.com • 630.724.9200

**V**  
VISIO, VERTERE, VIRTUTE. THE VISION TO TRANSFORM WITH EXCELLENCE.

  
ENGINEERS  
PLANNERS  
ECONOMISTS

**Wilbur Smith Associates**

801 Warrenville Road  
Suite 260  
Lisle, IL 60532  
(630) 434-8111  
(630) 434-8163 fax  
[www.wilbursmith.com](http://www.wilbursmith.com)

Offices Worldwide

**BAXTER**  
  
**WOODMAN**  
Consulting Engineers

**Providing Quality  
Transportation Design  
and Construction  
Services since 1946.**

Offices In:  
Crystal Lake, Mokena,  
DeKalb, Graylake,  
Plainfield and Rookford, IL  
[www.baxterwoodman.com](http://www.baxterwoodman.com)

 **BROWN**  
Traffic Products, Inc.

MERGING INNOVATION, TECHNOLOGY & SERVICE

**Call: 800.888.7078**

visit us on the web at: [www.browntraffic.com](http://www.browntraffic.com)

736 Federal Street, Suite 2312 • Davenport, Iowa 52803

An Employee-Owned Business

 **CIVILTECH**

*Innovative planning,  
design and construction solutions.*

North Branch • Chicago, Illinois

[www.civilltechinc.com](http://www.civilltechinc.com) tel: 630.773.3800 fax: 630.773.3975

**Outperformance™**  
in engineering, construction, and operations

 **CH2MHILL**

8501 W. Higgins Road, Suite 300 • Chicago, IL 60631-2801  
Tel: 773.693.3809 • Fax: 773.693.3823  
[www.ch2mhill.com](http://www.ch2mhill.com)

**Do you have  
employment  
opportunities?**

Advertise your job  
opening in *ITEMS*.  
For information  
contact:

**William Eidson**  
847.823.0500  
[weidson@cbbel.com](mailto:weidson@cbbel.com)

**INDUSTRY NEWS**

**ILLINOIS SECRETARY OF TRANSPORTATION RESIGNS**

Illinois Secretary of Transportation **Timothy Martin**, who joined the administration in February 2003, resigned Friday, January 26, 2007. **Milton Sees**, the director of highways, was named acting secretary.

Martin oversaw IDOT's \$10 billion annual transportation improvement program. Governor Blagojevich praised Martin, saying he "was instrumental in modernizing and making IDOT more efficient, and focused the agency on better using technology to accomplish its goals."

Spokesman Matt Vanover said Martin will take a private-sector job.

Martin, 50, had been chief operating officer of the Chicago Public Schools before joining the Blagojevich administration. Sees, who came to IDOT from the private sector just over a year ago, will assume Martin's responsibilities until Blagojevich nominates a permanent secretary, who must be confirmed by the Senate.

(Continued on page 17)





## MORE INDUSTRY NEWS

(Continued from page 16)

### JACOBS ENGINEERING

At the end of December, 2006, **Ken Glassman**, Traffic Operations Manager for the Illinois Tollway, and **Bruce Dinkheller**, previously of CTE joined Jacobs Engineering.

### POSITION CHANGES AT COOK COUNTY

Announced in January, Mr. **Rupert Graham** is serving as the Acting Superintendent of Highways, following the retirement of **Wally Kos**. Also, **John Beissel** assumed the head of the Bureau of Transportation & Planning, replacing **Chris Snyder**.

## RECEIVE RECOGNITION FOR YOUR GREAT WORKPLACE!

Ensure that your firm is recognized for its excellent workplace practices by applying to be ranked as a Best Civil Engineering Firm To Work For or a Best Structural Engineering Firm To Work For. Go to [www.cenews.com/bestfirm](http://www.cenews.com/bestfirm) to download the application documents, including instructions and the application form.

Any sized firm can apply – small, medium, or large! Designation on the CE News or Structural Engineer Best Engineering Firms To Work For lists is an excellent tool for recruiting and retention. And firms have found the entry proc-

### METRO TRANSPORTATION GROUP

Metro Transportation Group, Inc. announces the following management changes.

**David B. Miller**, P.E., Founder and President for the last 26 years has been named Chairman/CEO. Dave will now have a little more time to devote to staying in touch with Metro's many clients, friends and colleagues.

**Rolf P. Kilian** was appointed President of Metro Transportation Group, Inc. Rolf will oversee the day-to-day activities of running the company.



David B. Miller, P.E., Chairman/CEO and Founder of Metro Transportation Group.

ess to be enlightening – offering them an opportunity to critique their workplace practices and improve their firm.

Enter today at <http://news.cenews.com/bestfirm/index.htm> to learn more and to download the 2007 instructions and application. Applications must be received by April 20, 2007.

Questions? E-mail **Shanon Fauerbach**, P.E., at [sfauerbach@zweigwhite.com](mailto:sfauerbach@zweigwhite.com) or call her at 843-724-5006.



Rolf P. Kilian, President of Metro Transportation Group, Inc.

## RESOURCES FOR SENIOR EXECUTIVES

Exclusively for firms with fewer than 50 employees, their Small Firm Survey of Architecture, Engineering, Planning & Environmental Consulting Firms by **ZweigWhite**, a business information service firm for the Engineering, Architecture and Construction industry, is devoted to those who have responsibilities in everything from finance to marketing to human resources and information technology. For more information on the survey visit **ZweigWhite Research** online at <http://www.zweigwhite.com/research/index.asp> and click on Browse All

Publications.

**American Consulting Engineers Council (ACEC)** Senior Executives Institute (SEI) offers a 2-year program to senior executives from all sizes of firms to increase personal knowledge, skills, business acumen, and awareness of the environment in which they practice. For more information, and to enroll in Class XIII which will begin in the autumn of 2007, visit the SEI website at <http://www.acec.org/education/sei.cfm>.



**BE A FASHION TRENDSETTER-ILLINOIS ITE LOGO APPAREL**

The fashion wave keeps rolling. Thank you to **Joe Fazio, Chester Kropidowski, Matt Letourneau,** and **Govind Vadakpat** for supporting the scholarship fund through their apparel purchase. They join **Kim Kolody, Brian De LaSalle, John Ellis, Todd Fagen, Chris Kreuger, Amarpal Matharu,** and **Jeff Young** sporting Illinois Section wear. In anticipation of cool autumn days we have added the very reasonably priced water resistant Kasha lined coach's jacket. You too can now purchase these items by using the form on the following page.

Your purchases not only support the **Scholarship Fund**, but also provide work opportunities for employees of the Jo Daviess Workshop Incorporated. JDWI is a social service organization that provides work, wellness,

education instruction, social skills/activities, creative expression and recreation for individuals with disabilities in Jo Daviess County, Illinois. To find out more about this worthy organization visit their web site at <http://www.jdwi.org/>.

Samples of the initial apparel items are shown on this page and will be available for viewing and purchase at Section activities throughout the year. Currently we are only accepting checks when paying by mail order or cash and checks when purchasing in person. We may expand to credit card sales and the use of on-line payment services. In the mean time use the form on the following page to purchase our current line of apparel. Other apparel item that could be added to the list could include baseball and pull-over caps, tote bags, luggage, etc. Contact **Mark Rinnan** at [mrinnan@ekmail.com](mailto:mrinnan@ekmail.com) to suggest other items you might be interested in purchasing or discuss color options.

**A TESTIMENT TO QUALITY**

"The jacket is fantastic. With up and down weather this Spring, it works well to break the wind. It is a great transition from the winter coat to no coat at all. The material is surprisingly soft and very flexible and it looks more professional than a traditional windbreaker."

**Jeff Young, P.E.**  
Design Manager

McHenry County Division of Transportation



**ITEM 3408**

Ladies Cornflower Blue Premium Polo w/White Pique



**ITEM 3555**

Adult Black Honeycomb Stitch Polo w/ White Pique (Maroon with Black Pique shown)



**ITEM 8952**

Adult Chili Red Fleece Lined Jacket w/Black Trim (shown in Olive with Black Trim)



**ITEM 9000C**

Adult Ultra Cotton Crewneck Sweatshirt (Forest Green swatch shown)



**ITEM 3536**

Adult White Classic Polo with Black Pique (Maroon Pique shown) and

**ITEM 3537**

Adult Maroon Classic Polo with White Pique (Shown with Colors reversed )



**ITEM J401**

Adult Water Resistant Kasha Lined Coach's Jacket (color swatches shown)





**ILLINOIS SECTION  
INSTITUTE OF TRANSPORTATION ENGINEERS**

Illinois Section ITE Logo Apparel  
c/o Edwards and Kelcey  
One North Franklin, Suite 500  
Chicago, IL 60606

For orders and to check status  
Phone: 312-251-3000  
Fax: 312-251-3015  
E-mail: mletourneau@ekmail.com

**Illinois Section ITE Logo Apparel –2006**

**All items include embroidered Illinois Section ITE Logo**

Item #	Description	Size	Qty.	Price	Subtotal
8536	Adult White Classic Polo with Black Pique	S M L XL 2XL 3XL		\$35.00	
8537	Adult Maroon Classic Polo with White Pique	S M L XL 2XL 3XL		\$35.00	
8555	Adult Black Honeycomb Stitch Polo w/White Pique	S M L XL 2XL 3XL		\$35.00	
3408	Ladies Cornflower Blue Premium Polo w/White Pique	S M L XL 2XL		\$35.00	
9000C	Adult Forest Green Ultra Cotton Crewneck Sweatshirt	S M L XL 2XL		\$27.50	
 J401	Adult Royal Blue or Forest Green Coach's Jacket	S M L XL 2XL		\$35.00	
8952	Adult Chili Red Fleece Lined Jacket w/Black Trim	S M L XL 2XL 3XL		\$65.00	

Order total: \_\_\_\_\_

Tax: Exempt

Shipping: \$5.00

Total: \_\_\_\_\_

**Please allow about 6 weeks delivery from time of order.**

**At present we do not offer express delivery.**

**Please note we CANNOT ship to a P.O. Box**

Please make checks payable to:

**Illinois Section ITE**

\_\_\_\_\_  
Name

\_\_\_\_\_  
E-mail Address

\_\_\_\_\_  
Street Address

\_\_\_\_\_  
Phone

\_\_\_\_\_  
Address continued, Suite, or Apartment No.

\_\_\_\_\_  
City State Zip Code

We are on the web!

www.ilite.org



## ILLINOIS SECTION OFFICERS AND COMMITTEES

### OFFICERS

President	Peter Lemmon	(312) 853-0820	pcl@metrotransportation.com
Vice President	Amarpal Matharu	(773) 693-3809	Amatharu@CH2M.com
Secretary	Matt Letourneau	(312) 424-5424	mletourneau@ekmail.com
Treasurer	Tim Sjogren	(630) 213-1000	tps@metrotransportation.com

### ACTIVITIES GROUP

Director	Joel Christell	(630) 773-3900	jchristell@civiltechinc.com
<b>Committees:</b>			
House & Special Events	Steve Pautsch Brian DeSalle	(630) 773-3900 (630) 773-3900	spautsch@civiltechinc.com bdesalle@civiltechinc.com
Program	Gregory Gedemer	(847) 518-9990	Ggedemer@kloainc.com
Awards	OPEN		

### TECHNICAL GROUP

Director	Kim Kolody	(773) 693-3809	kkolody@ch2m.com
<b>Committees:</b>			
Seminars	OPEN		
Transportation Planning	OPEN		
ITS	Scott Lee	(847) 925-0120	slee@nateng.com
Roundabouts	Mike Gingrich	(630) 823-3215	mag@metrotransportation.com

### STUDENT AFFAIRS GROUP

Director	Kevin O'Neill	(312) 697-7231	kevin_oneill@urscorp.com
<b>Committees:</b>			
Scholarship	Sara Disney	(630) 213-1000	sjd@metrotransportation.com
Internship	Mayank Goyal	(312) 384-6338	mgoyal@ekmail.com
Student Activities	Dan Nowak	(773) 693-3809	dan.nowak@CH2M.com

### PUBLIC AFFAIRS GROUP

Director	Govind Vadakpat	(312) 930-5234	govind.vadakpat@parsons.com
<b>Committees:</b>			
Public Relations	Melanie Williams	(847) 823-0500	mwilliams@cbbel.com
Legislative Affairs	Dan Loftus	(312) 446-3447	djl@djloftus.com
Conference Coordination	C. Kropidlowski	(312) 744-4866	ckropidlow@aol.com
Past President's	Dennis Dal Santo	(312) 793-2267	Dennis.DalSanto@illinois.gov

### OPERATIONS GROUP

Director	Tom Hein	773-314-1200 ext 2864	tmhein@ace-plc.com
<b>Committees:</b>			
Records & Mailing	Joe Emry	(630) 773-3900	jemry@civiltechinc.com
Ambassador	Mike Phan	773-314-1200 ext 2687	mtphan@ace-plc.com
Advertising	Bill Eidson	(847) 823-0500	weidson@cbbel.com
Website	YoungJae Ju	(312) 930-9119	yju@hntb.com
ITEMS	Mark Rinnan	(312) 424-5419	mrinnan@ekmail.com